



Theme: ***Students First!***

Vision: *Southwestern Leads and Inspires Lifelong Learning*

SOUTHWESTERN
Oregon Community College

Measure of Achievement 1
Student FTE Enrollment Reports
Summer 2010

Presented By: *Tom Nicholls, Executive Director of Enrollment Services*
Date Presented: October 25, 2010, Board of Education Meeting

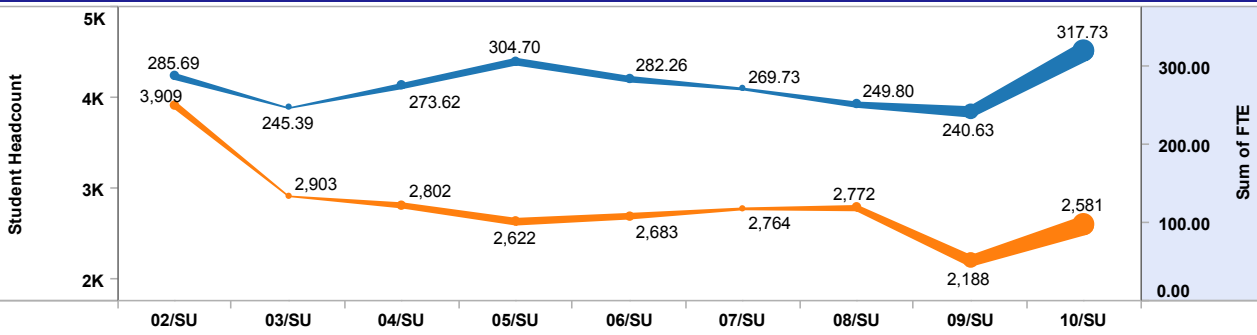
Purpose	Monitor fluctuations and be aware of changes in FTE credit by students or groups.
Achievement Overview and Analysis	Summer term 2010 FTE increased by over 30% from Summer 2009 with the increases coming primarily from a renewed effort in our High School Credit Recovery program and a continued increase in E-learning FTE.
Southwestern Strategic Plan Goal Results and Achievement	Goal 2: Increase student access to learning opportunities through recruitment and retention.
Reporting Unit Goal Results and Achievement	Increase enrollment and FTE.
Unit Objectives Results and Achievement	Unit Objective: Provide support for program recruitment and retention Continuous Improvement Action Plan: In collaboration with program administrators, conduct a gap analysis with respect to non-credit student enrollments.
Accreditation, Federal, State, Audit and Other Reporting Requirements	Accreditation Standard: Standard One and Standard Five State Reporting: OCCURS data submission submitted timely and error free.
Budget Impact and Budgetary Considerations	No new budget needed at this time, pending further analysis and implementation of the Strategic Enrollment Management Plan.
Documentation and Process for Measure Data	Measure Number: Measure 1– Student Enrollment Reports: 1A and 1B Documentation Posted: SOCC Measures of Achievement Website at: http://www.socc.edu/ie/pgs/research/measures/index.shtml TracDat Assessment Software: Strategic Plan Documents: Measures of Achievement Folder Data References: OCCURS data extraction of the course data elements Tableau Workbook: Student Data Set



Southwestern Oregon Community College Measures of Achievement

MA 1A: FTE Demographics Summer - College Overview

Summer FTE and Enrollment



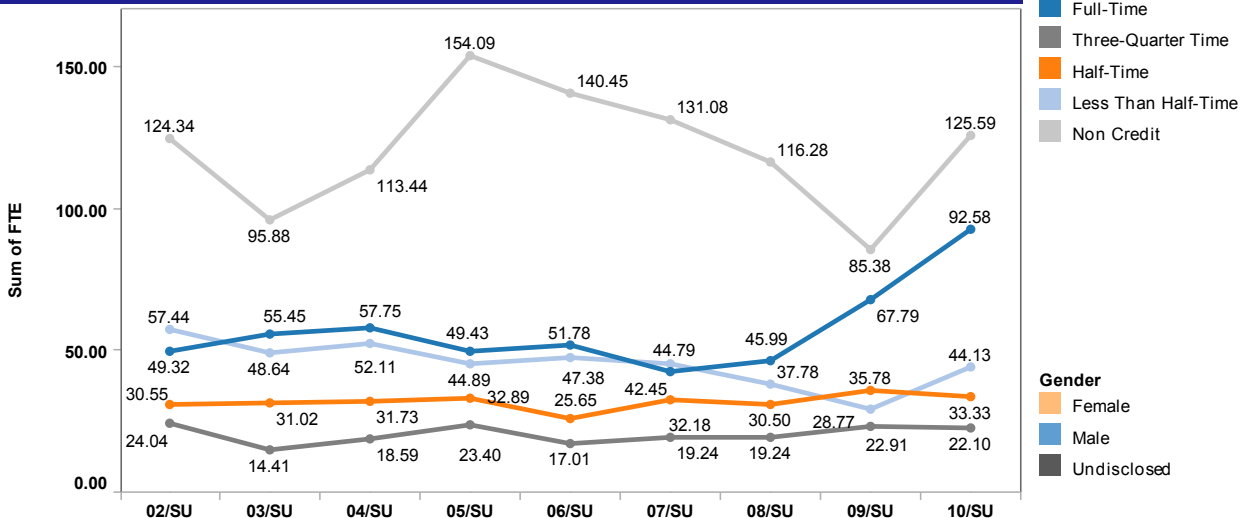
Summer FTE by Residency State

AK	0.78
AL	0.06
AZ	0.21
CA	4.26
CO	0.45
CT	0.26
FL	0.63
GA	1.10
HI	0.52
ID	3.14
IL	0.65
KY	0.06
LA	0.06
MA	0.80
MI	0.41
MN	0.65
MO	0.07
MS	0.13
MT	1.25
NC	0.26
NE	0.06
NJ	0.19
NM	0.45
NV	1.87
NY	0.45
OH	0.35
OK	0.39
OR	285.97
PA	0.09
SC	0.19
TX	0.75
UT	0.35
TN	0.06
VA	0.32
WA	4.08
WY	0.52
International	0.24
Not Reported	5.64
Grand Total	317.73

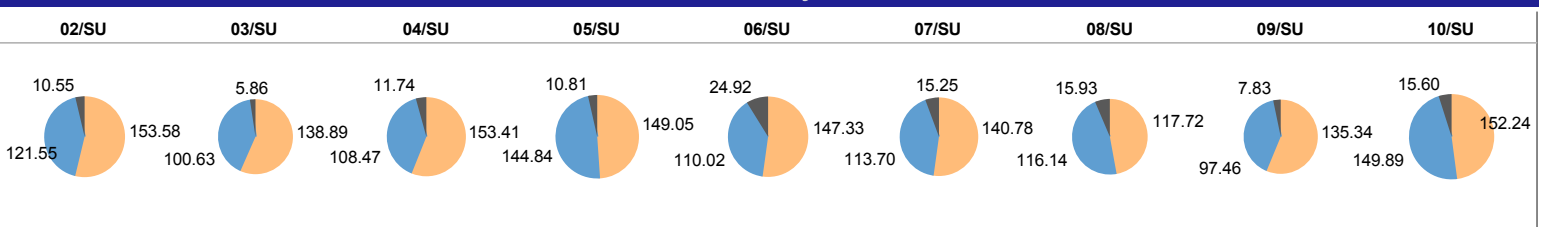
Summer FTE by Ethnicity

Ethnicity Race		02/SU	03/SU	04/SU	05/SU	06/SU	07/SU	08/SU	09/SU	10/SU
American Indian/Alaska Native	Sum of FTE	10.61	6.60	7.86	8.15	9.10	9.29	8.62	10.72	10.40
	Percent of FTE	2.33%	1.90%	2.25%	1.83%	2.31%	2.28%	2.53%	2.97%	2.67%
Asian	Sum of FTE	3.44	2.46	4.61	4.46	5.03	6.34	5.36	5.16	6.87
	Percent of FTE	1.01%	0.90%	0.89%	0.88%	1.72%	1.34%	1.52%	1.78%	1.39%
Black	Sum of FTE	1.37	1.53	1.67	0.90	3.29	2.73	3.40	1.47	2.91
	Percent of FTE	0.29%	0.31%	0.36%	0.15%	0.52%	0.72%	0.61%	0.55%	0.50%
Caucasian	Sum of FTE	163.95	159.50	176.33	159.71	152.88	152.21	139.85	161.06	193.50
	Percent of FTE	46.41%	51.69%	53.42%	51.76%	49.37%	49.02%	50.61%	58.00%	55.37%
Foreign Student	Sum of FTE	16.13	9.32	3.19	3.70	2.47	3.91	2.86	0.52	5.57
	Percent of FTE	1.84%	0.79%	0.32%	0.42%	0.37%	0.43%	0.43%	0.18%	0.97%
Hispanic	Sum of FTE	11.35	12.73	10.30	6.27	10.09	7.69	9.90	11.01	16.13
	Percent of FTE	2.54%	3.76%	2.47%	2.06%	2.13%	2.35%	2.92%	3.70%	3.76%
Undisclosed	Sum of FTE	78.84	53.24	69.66	121.51	99.40	87.55	79.80	50.68	82.36
	Percent of FTE	45.58%	40.65%	40.29%	42.89%	43.59%	43.85%	41.38%	32.82%	35.34%
Grand Total	Sum of FTE	285.69	245.39	273.62	304.70	282.26	269.73	249.80	240.63	317.73
	Percent of FTE	100.00%	100.00%	100.00%	100.00%	100.00%	100.00%	100.00%	100.00%	100.00%

Summer FTE By Enrollment Status



Summer FTE by Gender

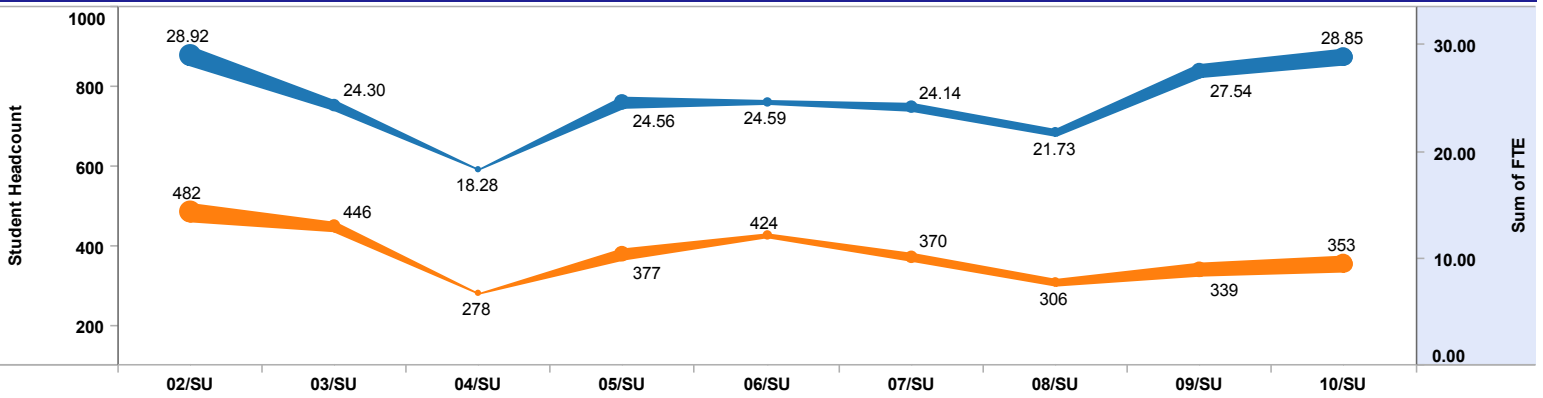




Southwestern Oregon Community College Measures of Achievement

MA 1A: FTE Demographics Summer - Curry Campus

Summer Curry FTE and Enrollment



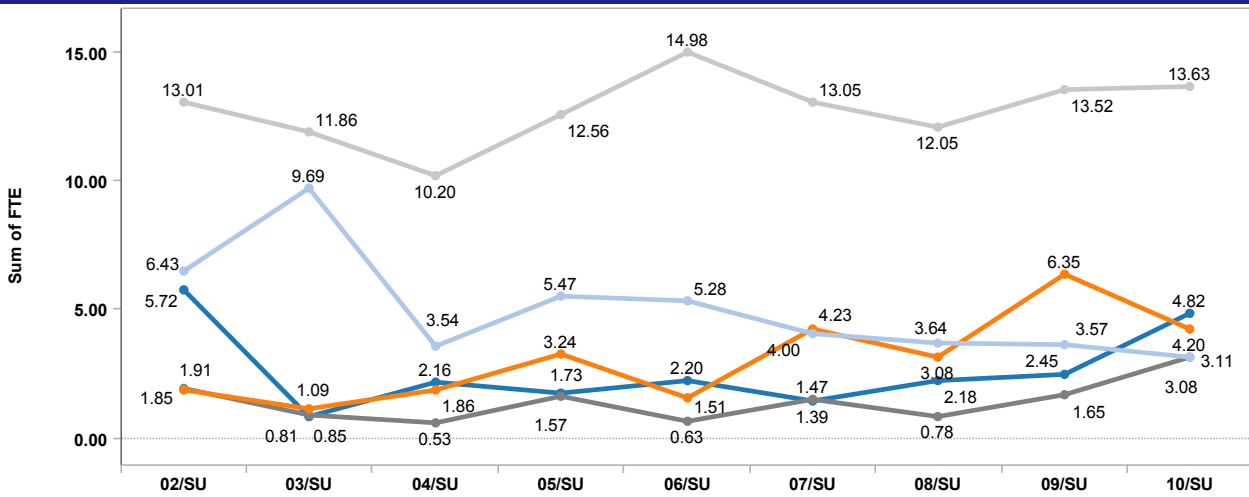
Summer Curry FTE by Ethnicity

Ethnicity Race		02/SU	03/SU	04/SU	05/SU	06/SU	07/SU	08/SU	09/SU	10/SU
American Indian/Alaska Native	Sum of FTE	0.85	0.51	0.32	0.63	0.15	0.54	1.52	0.83	1.69
	Percent of FTE	1.70%	1.12%	1.44%	1.07%	0.47%	0.81%	2.61%	2.65%	3.12%
Asian	Sum of FTE	0.56	0.17	0.37	0.07	0.18	0.17	0.09	0.21	
	Percent of FTE	1.49%	0.90%	0.36%	0.27%	0.47%	0.54%	0.33%	1.18%	
Black	Sum of FTE									0.14
	Percent of FTE									0.28%
Caucasian	Sum of FTE	15.51	11.37	9.92	13.03	10.93	13.24	11.24	15.71	14.95
	Percent of FTE	40.55%	36.32%	42.96%	41.71%	34.91%	41.62%	41.83%	46.61%	43.63%
Hispanic	Sum of FTE	1.25	1.61	1.55	0.47	1.89	0.64	0.67	1.92	1.15
	Percent of FTE	3.82%	6.95%	5.42%	3.74%	3.30%	2.70%	3.92%	5.60%	2.55%
Undisclosed	Sum of FTE	10.76	10.64	6.12	10.37	11.45	9.55	8.23	8.87	10.92
	Percent of FTE	52.44%	54.71%	49.82%	53.21%	60.85%	54.32%	51.31%	43.95%	50.42%
Grand Total	Sum of FTE	28.92	24.30	18.28	24.56	24.59	24.14	21.73	27.54	28.85
	Percent of FTE	100.00%	100.00%	100.00%	100.00%	100.00%	100.00%	100.00%	100.00%	100.00%

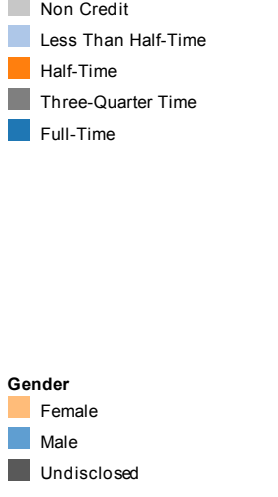
Summer Curry FTE by Residency State

CA	0.02
OR	28.79
TX	0.02
WA	0.02
Grand Total	28.85

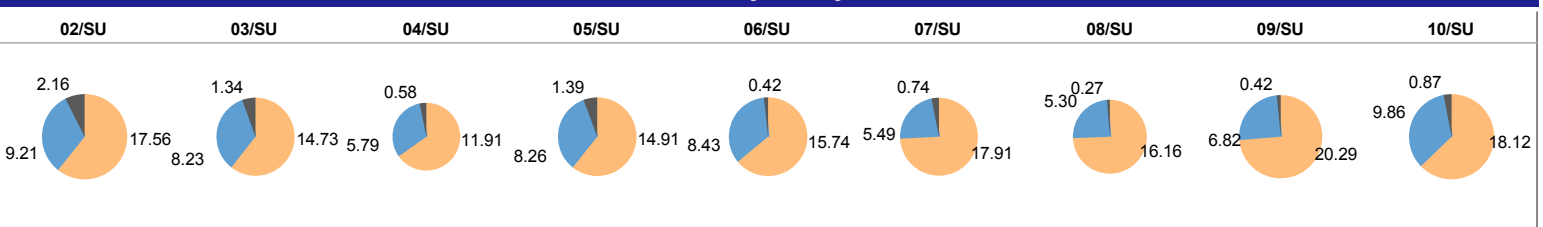
Summer Curry FTE by Enrollment Status



Term Credits Attempted Status



Summer Curry FTE by Gender





Southwestern Oregon Community College Measures of Achievement

MA 1B: FTE Credit and Non Credit Report by Program Area Summer - College Overview

Program Area		02/SU	03/SU	04/SU	05/SU	06/SU	07/SU	08/SU	09/SU	10/SU
Associate Applied Science	Sum of FTE	23.50	34.83	50.92	53.54	58.74	54.05	50.57	77.23	84.47
	Percent of FTE	4.41%	5.59%	7.23%	8.68%	8.95%	9.27%	9.81%	15.45%	14.06%
Associate Arts - Oregon Transfer	Sum of FTE	40.43	45.08	50.67	51.25	49.19	47.51	45.16	55.47	65.28
	Percent of FTE	6.12%	7.73%	8.91%	10.09%	10.70%	9.56%	10.89%	16.91%	15.50%
Associate General Science	Sum of FTE		0.77	2.39	3.70	2.26	2.07	1.61	4.22	4.96
	Percent of FTE		0.17%	0.36%	0.80%	0.56%	0.51%	0.36%	0.96%	1.16%
Associate Science Degrees	Sum of FTE	12.22	9.00	5.73	6.65	8.75	8.14	6.51	8.25	9.59
	Percent of FTE	1.97%	2.28%	1.61%	2.22%	2.16%	2.03%	1.95%	2.61%	2.25%
Dual Admit Four Year Schools	Sum of FTE	7.87	6.94	7.87	6.70	7.05	5.31	4.69	0.15	0.83
	Percent of FTE	2.15%	2.48%	2.72%	2.18%	2.46%	2.24%	2.56%	0.05%	0.19%
Certificates One Year	Sum of FTE	24.42	13.57	6.75	4.16	5.49	6.23	8.17	5.58	5.87
	Percent of FTE	2.46%	2.00%	1.79%	1.61%	1.49%	1.63%	1.98%	1.97%	1.98%
Certificates Less than One Year	Sum of FTE	1.53	0.69	0.65	0.36	0.95	0.81	2.00	0.63	0.93
	Percent of FTE	0.23%	0.21%	0.18%	0.15%	0.30%	0.18%	0.40%	0.27%	0.27%
TO Specialized Certificates	Sum of FTE	5.26	8.38	3.94	1.22	1.49	2.19	0.57	1.28	0.53
	Percent of FTE	0.78%	1.17%	1.07%	0.38%	0.41%	0.54%	0.54%	0.32%	0.23%
BDC Seminar & Target Custom	Sum of FTE	0.31	0.20	0.16		0.03	0.04	0.05	0.03	0.03
	Percent of FTE	0.16%	0.31%	0.21%		0.15%	0.07%	0.11%	0.09%	0.04%
Employee Skills Training & Job Skills	Sum of FTE	5.23	10.77	9.56	10.14	11.93	8.82	3.73	3.42	0.24
	Percent of FTE	0.86%	1.62%	1.61%	1.72%	1.79%	1.05%	1.05%	0.78%	0.35%
Adult Basic Education & GED	Sum of FTE	10.68	8.89	7.34	6.98	10.07	8.62	13.67	11.89	10.46
	Percent of FTE	2.31%	2.10%	1.72%	1.38%	1.83%	1.67%	2.99%	3.20%	2.25%
Adult High School Diploma	Sum of FTE				0.19		0.42	0.20		0.13
	Percent of FTE				0.04%		0.07%	0.04%		0.08%
English Second Language	Sum of FTE	6.19	6.46	4.91	4.41	2.19	3.14	3.55	2.18	1.45
	Percent of FTE	1.27%	2.00%	0.97%	1.11%	0.48%	0.76%	0.79%	0.82%	0.39%
Non Degree Seeking	Sum of FTE	148.06	99.82	122.73	155.42	124.11	122.36	109.30	70.31	132.95
	Percent of FTE	77.29%	72.33%	71.63%	69.65%	68.72%	70.42%	66.52%	56.58%	61.26%
Grand Total	Sum of FTE	285.69	245.39	273.62	304.70	282.26	269.73	249.80	240.63	317.73
	Percent of FTE	100.00%	100.00%	100.00%	100.00%	100.00%	100.00%	100.00%	100.00%	100.00%



Southwestern Oregon Community College Measures of Achievement

MA 1B: FTE Credit and Non Credit Report by Program Area Summer - Curry

Summer Curry FTE by Program Area

Program Area		02/SU	03/SU	04/SU	05/SU	06/SU	07/SU	08/SU	09/SU	10/SU
Associate Applied Science	Sum of FTE	1.30	0.62	2.61	3.16	2.80	1.50	3.19	4.96	3.90
	Percent of FTE	2.55%	1.35%	3.61%	4.01%	2.12%	2.97%	6.54%	7.08%	5.10%
Associate Arts - Oregon Transfer	Sum of FTE	4.86	1.40	0.75	1.76	2.51	4.15	4.02	4.56	7.42
	Percent of FTE	5.52%	2.69%	3.61%	2.67%	4.95%	6.76%	10.78%	10.03%	12.18%
Associate General Science	Sum of FTE				0.18		0.25	0.05	0.32	
	Percent of FTE				0.53%		0.54%	0.33%	0.59%	
Associate Science Degrees	Sum of FTE	0.49	0.26	0.25	0.60	0.81	0.61	0.45	0.40	0.22
	Percent of FTE	1.06%	0.90%	1.44%	1.07%	1.65%	0.81%	0.65%	0.88%	0.57%
Dual Admit Four Year Schools	Sum of FTE	0.58	0.88	0.38	0.11		0.04			0.52
	Percent of FTE	1.49%	2.02%	1.81%	0.80%		0.27%			0.28%
Certificates One Year	Sum of FTE	1.08	1.24	0.41	0.62	0.47	0.30	0.06	0.88	0.79
	Percent of FTE	1.91%	1.57%	1.44%	2.41%	1.18%	0.27%	0.33%	1.47%	1.13%
Certificates Less than One Year	Sum of FTE	0.01	0.64		0.06			0.46	0.04	0.11
	Percent of FTE	0.42%	0.67%		0.27%			0.98%	0.29%	0.57%
TO Specialized Certificates	Sum of FTE	1.06	0.82							0.30
	Percent of FTE	0.42%	0.22%							0.28%
BDC Seminar & Target Custom	Sum of FTE	0.18	0.09							
	Percent of FTE	0.21%	0.22%							
Employee Skills Training & Job Skills	Sum of FTE			0.01		0.75				0.05
	Percent of FTE			0.36%		0.24%				0.28%
Adult Basic Education & GED	Sum of FTE	0.92	0.30		0.01	0.50		0.10	0.45	0.19
	Percent of FTE	2.34%	1.12%		0.27%	0.94%		0.65%	1.18%	0.57%
Adult High School Diploma	Sum of FTE						0.11			
	Percent of FTE						0.27%			
English Second Language	Sum of FTE	0.94	1.28	0.66	0.12	0.28	0.11	0.14	0.12	
	Percent of FTE	2.76%	5.61%	2.53%	1.34%	0.47%	0.27%	0.65%	0.88%	
Non Degree Seeking	Sum of FTE	17.50	16.77	13.22	17.94	16.46	17.07	13.26	15.80	15.35
	Percent of FTE	81.32%	83.63%	85.20%	86.63%	88.44%	87.84%	79.08%	77.58%	79.04%
Grand Total	Sum of FTE	28.92	24.30	18.28	24.56	24.59	24.14	21.73	27.54	28.85
	Percent of FTE	100.00%	100.00%	100.00%	100.00%	100.00%	100.00%	100.00%	100.00%	100.00%