



Theme: ***Students First!***

Vision: *Southwestern Leads and Inspires Lifelong Learning*

SOUTHWESTERN
Oregon Community College

Measure of Achievement 2
Student Enrollment Reports
Summer 2010

Presented By: *Tom Nicholls, Executive Director of Enrollment Services*
Date Presented: October 25, 2010, Board of Education Meeting

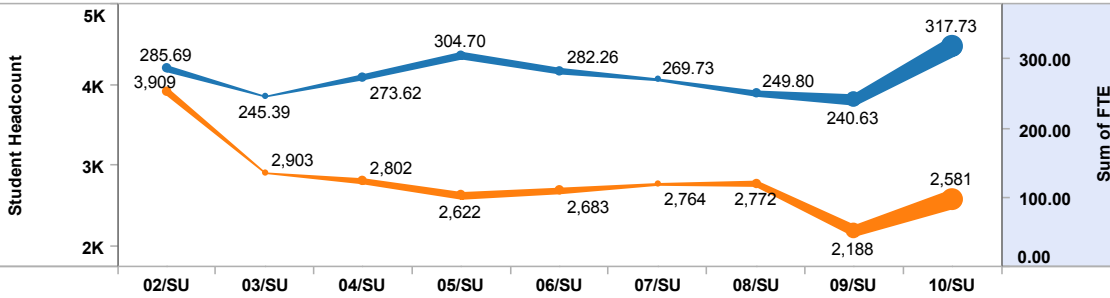
Purpose	Monitor fluctuations and be aware of changes in FTE credit by students or groups.
Achievement Overview and Analysis	Summer term 2010 saw an increase in student head count in high school credit recovery as a result of stated unit objectives and in E-learning as a result of increased course offerings in this area over Summer term 2009
Southwestern Strategic Plan Goal Results and Achievement	Goal 2: Increase student access to learning opportunities through recruitment and retention.
Reporting Unit Goal Results and Achievement	Increase enrollment and FTE.
Unit Objectives Results and Achievement	Unit Objective: Provide support for program recruitment and retention Continuous Improvement Action Plan: In collaboration with program administrators, conduct a gap analysis with respect to non-credit student enrollments.
Accreditation, Federal, State, Audit and Other Reporting Requirements	Accreditation Standard: Standard One and Standard Five State Reporting: OCCURS data submission submitted timely and error free.
Budget Impact and Budgetary Considerations	No new budget needed at this time, pending further analysis and implementation of the Strategic Enrollment Management Plan.
Documentation and Process for Measure Data	Measure Number: Measure 1– Student Enrollment Reports: 2A and 2B Documentation Posted: SOCC Measures of Achievement Website at: http://www.socc.edu/ie/pgs/research/measures/index.shtml TracDat Assessment Software: Strategic Plan Documents: Measures of Achievement Folder Data References: OCCURS data extraction of the course data elements Tableau Workbook: Student Data Set



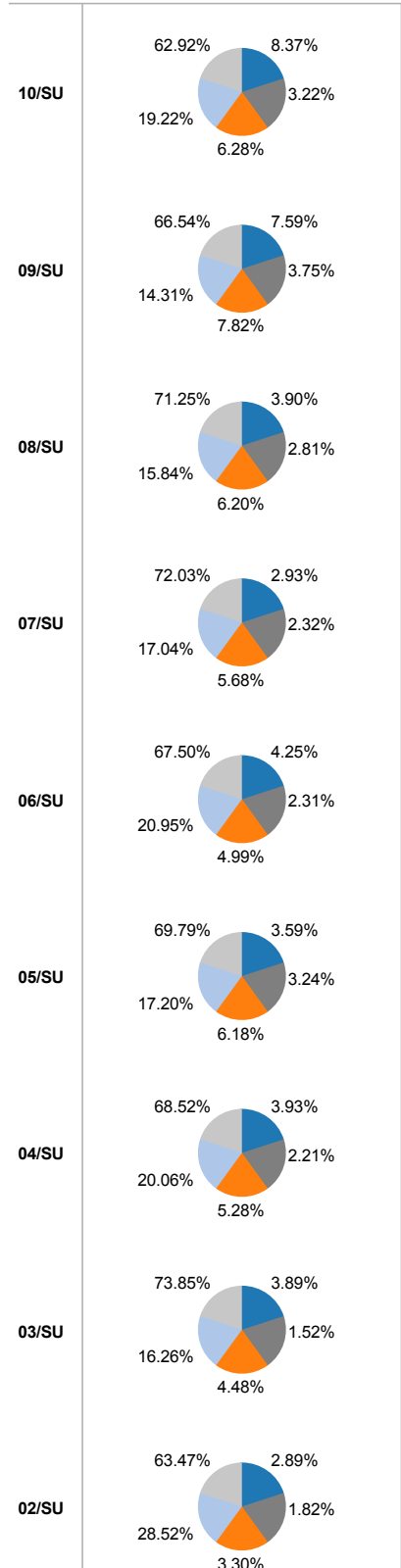
Southwestern Oregon Community College Measures of Achievement

MA 2A: Enrollment Demographics Summer - College Overview

Summer FTE and Enrollment



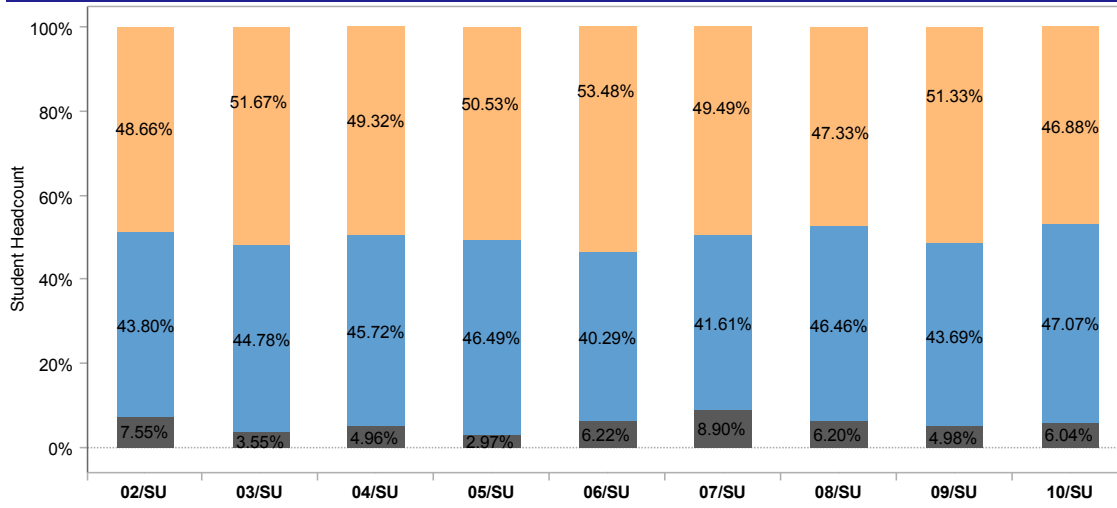
Percentage by Enrollment Status



Summer Enrollment by Ethnicity

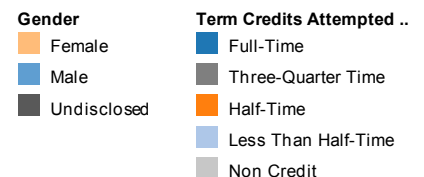
Ethnicity Race		02/SU	03/SU	04/SU	05/SU	06/SU	07/SU	08/SU	09/SU	10/SU
American Indian/Alaska Native	Headcount Percent	2.33%	1.89%	2.25%	1.83%	2.31%	2.28%	2.53%	2.97%	2.67%
	Student Headcount	91	55	63	48	62	63	70	65	69
Asian	Headcount Percent	1.05%	0.90%	0.93%	0.92%	1.71%	1.34%	1.52%	1.78%	1.39%
	Student Headcount	41	26	26	24	46	37	42	39	36
Black	Headcount Percent	0.28%	0.31%	0.36%	0.15%	0.52%	0.72%	0.61%	0.55%	0.50%
	Student Headcount	11	9	10	4	14	20	17	12	13
Caucasian	Headcount Percent	46.74%	51.67%	53.28%	51.72%	49.39%	49.02%	50.61%	58.00%	55.37%
	Student Headcount	1,827	1,500	1,493	1,356	1,325	1,355	1,403	1,269	1,429
Foreign Student	Headcount Percent	1.82%	0.79%	0.32%	0.42%	0.37%	0.43%	0.43%	0.18%	0.97%
	Student Headcount	71	23	9	11	10	12	12	4	25
Hispanic	Headcount Percent	2.51%	3.75%	2.57%	2.10%	2.12%	2.35%	2.92%	3.70%	3.76%
	Student Headcount	98	109	72	55	57	65	81	81	97
Undisclosed	Headcount Percent	45.28%	40.68%	40.29%	42.87%	43.57%	43.85%	41.38%	32.82%	35.34%
	Student Headcount	1,770	1,181	1,129	1,124	1,169	1,212	1,147	718	912
Grand Total	Headcount Percent	100.00%	100.00%	100.00%	100.00%	100.00%	100.00%	100.00%	100.00%	100.00%
	Student Headcount	3,909	2,903	2,802	2,622	2,683	2,764	2,772	2,188	2,581

Summer Enrollment Percentage by Gender



Summer Enrollment by Enrollment Status

	02/SU	03/SU	04/SU	05/SU	06/SU	07/SU	08/SU	09/SU	10/SU
Full-Time	113	113	110	94	114	81	108	166	216
Three-Quarter Time	71	44	62	85	62	64	78	82	83
Half-Time	129	130	148	162	134	157	172	171	162
Less Than Half-Time	1,115	472	562	451	562	471	439	313	496
Non Credit	2,481	2,144	1,920	1,830	1,811	1,991	1,975	1,456	1,624
Grand Total	3,909	2,903	2,802	2,622	2,683	2,764	2,772	2,188	2,581

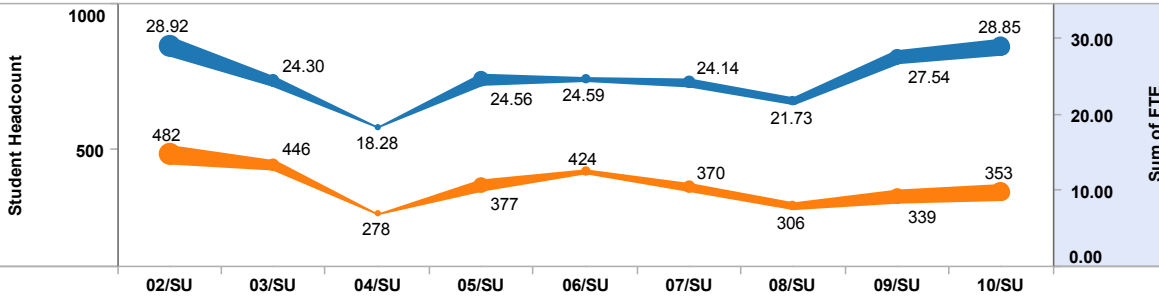




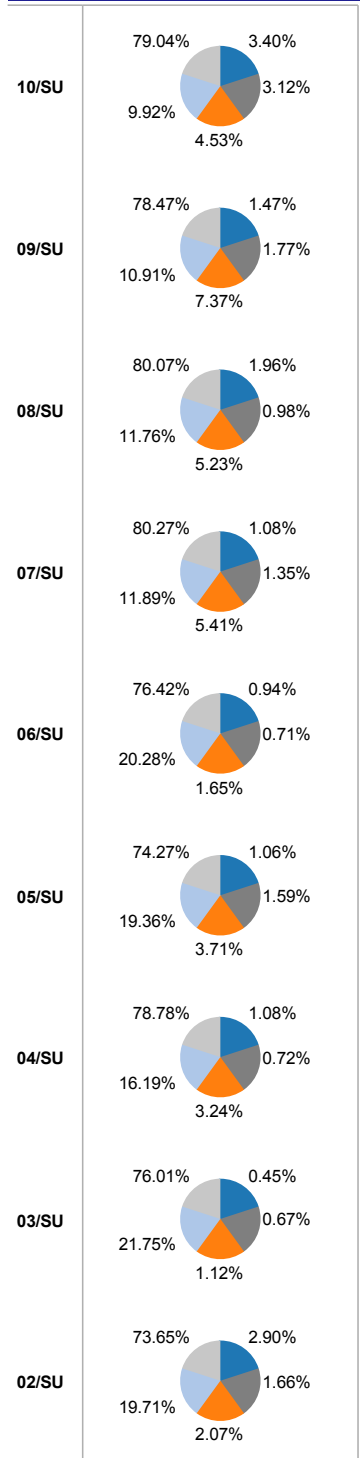
Southwestern Oregon Community College Measures of Achievement

MA 2A: Enrollment Demographics Summer - Curry

Summer Curry FTE and Enrollment



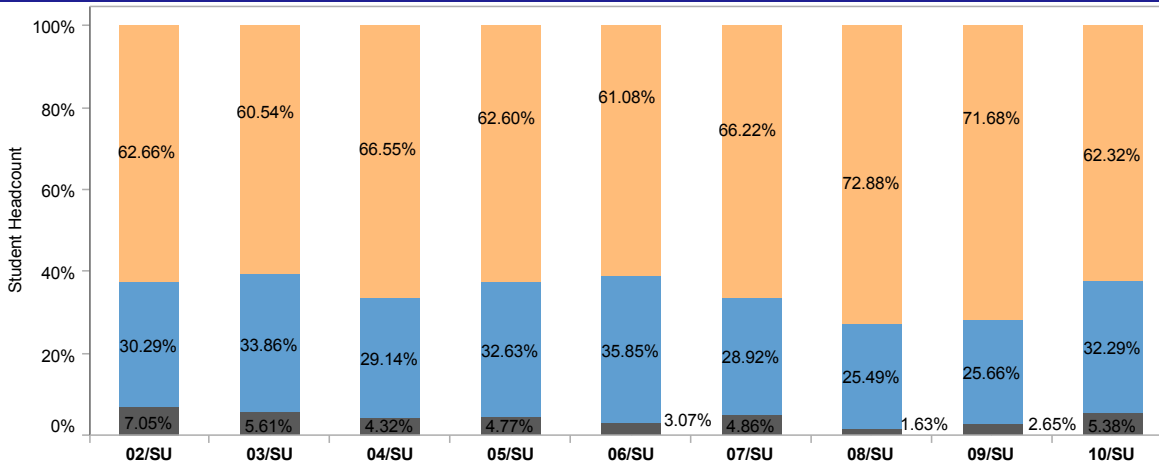
Percentage by Enrollment Status



Summer Curry Enrollments by Ethnicity

Ethnicity Race		02/SU	03/SU	04/SU	05/SU	06/SU	07/SU	08/SU	09/SU	10/SU
American Indian/Alaska Native	Headcount Percent	1.87%	1.12%	1.44%	1.06%	0.47%	0.81%	2.61%	2.65%	3.12%
	Student Headcount	9.0	5.0	4.0	4.0	2.0	3.0	8.0	9.0	11.0
Asian	Headcount Percent	1.66%	0.90%	0.36%	0.27%	0.47%	0.54%	0.33%	1.18%	
	Student Headcount	8.0	4.0	1.0	1.0	2.0	2.0	1.0	4.0	
Black	Headcount Percent									0.28%
	Student Headcount									1.0
Caucasian	Headcount Percent	40.46%	36.32%	42.81%	41.64%	34.91%	41.62%	41.83%	46.61%	43.63%
	Student Headcount	195.0	162.0	119.0	157.0	148.0	154.0	128.0	158.0	154.0
Hispanic	Headcount Percent	3.73%	6.95%	5.40%	3.71%	3.30%	2.70%	3.92%	5.60%	2.55%
	Student Headcount	18.0	31.0	15.0	14.0	14.0	10.0	12.0	19.0	9.0
Undisclosed	Headcount Percent	52.28%	54.71%	50.00%	53.32%	60.85%	54.32%	51.31%	43.95%	50.42%
	Student Headcount	252.0	244.0	139.0	201.0	258.0	201.0	157.0	149.0	178.0
Grand Total	Headcount Percent	100.00%	100.00%	100.00%	100.00%	100.00%	100.00%	100.00%	100.00%	100.00%
	Student Headcount	482.0	446.0	278.0	377.0	424.0	370.0	306.0	339.0	353.0

Summer Curry Enrollment Percentage by Gender



Summer Curry Enrollment by Enrollment Status

	02/SU	03/SU	04/SU	05/SU	06/SU	07/SU	08/SU	09/SU	10/SU
Full-Time	14	2	3	4	4	4	6	5	12
Three-Quarter Time	8	3	2	6	3	5	3	6	11
Half-Time	10	5	9	14	7	20	16	25	16
Less Than Half-Time	95	97	45	73	86	44	36	37	35
Non Credit	355	339	219	280	324	297	245	266	279
Grand Total	482	446	278	377	424	370	306	339	353

Term Credits Attempted Status

- Full-Time
- Three-Quarter Time
- Half-Time
- Less Than Half-Time
- Non Credit

Gender

- Female
- Male
- Undisclosed



Southwestern Oregon Community College Measures of Achievement

MA 2B: Enrollment Credit and Non Credit Report by Program Area Summer - College Overview

Program Area		02/SU	03/SU	04/SU	05/SU	06/SU	07/SU	08/SU	09/SU	10/SU
Associate Arts - Oregon Transfer	Headcount Percent	6.29%	7.72%	8.89%	10.07%	10.70%	9.55%	10.89%	16.91%	15.50%
	Student Headcount	246	224	249	264	287	264	302	370	400
Associate Science Degrees	Headcount Percent	1.94%	2.27%	1.61%	2.21%	2.16%	2.03%	1.95%	2.61%	2.25%
	Student Headcount	76	66	45	58	58	56	54	57	58
Associate General Science	Headcount Percent		0.17%	0.36%	0.80%	0.56%	0.51%	0.36%	0.96%	1.16%
	Student Headcount		5	10	21	15	14	10	21	30
Associate Applied Science	Headcount Percent	4.50%	5.58%	7.21%	8.70%	8.95%	9.26%	9.81%	15.45%	14.06%
	Student Headcount	176	162	202	228	240	256	272	338	363
Dual Admit Four Year Schools	Headcount Percent	2.17%	2.48%	2.71%	2.17%	2.50%	2.24%	2.56%	0.05%	0.19%
	Student Headcount	85	72	76	57	67	62	71	1	5
Certificates One Year	Headcount Percent	2.43%	2.00%	1.78%	1.60%	1.49%	1.63%	1.98%	1.97%	1.98%
	Student Headcount	95	58	50	42	40	45	55	43	51
Certificates Less than One Year	Headcount Percent	0.23%	0.21%	0.18%	0.15%	0.30%	0.18%	0.40%	0.27%	0.27%
	Student Headcount	9	6	5	4	8	5	11	6	7
TO Specialized Certificates	Headcount Percent	0.82%	1.17%	1.07%	0.38%	0.41%	0.54%	0.54%	0.32%	0.23%
	Student Headcount	32	34	30	10	11	15	15	7	6
Employee Skills Training & Job Skills	Headcount Percent	0.84%	1.62%	1.61%	1.72%	1.79%	1.05%	1.05%	0.78%	0.35%
	Student Headcount	33	47	45	45	48	29	29	17	9
BDC Seminar & Target Custom	Headcount Percent	0.15%	0.31%	0.21%		0.15%	0.07%	0.11%	0.09%	0.04%
	Student Headcount	6	9	6		4	2	3	2	1
Adult Basic Education & GED	Headcount Percent	2.33%	2.14%	1.71%	1.37%	1.83%	1.66%	2.99%	3.20%	2.25%
	Student Headcount	91	62	48	36	49	46	83	70	58
Adult High School Diploma	Headcount Percent				0.04%		0.07%	0.04%		0.08%
	Student Headcount				1		2	1		2
English Second Language	Headcount Percent	1.25%	2.00%	1.03%	1.11%	0.48%	0.76%	0.79%	0.82%	0.39%
	Student Headcount	49	58	29	29	13	21	22	18	10
Non Degree Seeking	Headcount Percent	77.03%	72.34%	71.63%	69.68%	68.69%	70.44%	66.52%	56.58%	61.26%
	Student Headcount	3,011	2,100	2,007	1,827	1,843	1,947	1,844	1,238	1,581
Grand Total	Headcount Percent	100.00%	100.00%	100.00%	100.00%	100.00%	100.00%	100.00%	100.00%	100.00%
	Student Headcount	3,909	2,903	2,802	2,622	2,683	2,764	2,772	2,188	2,581



Southwestern Oregon Community College Measures of Achievement

MA 2B: Enrollment Credit and Non Credit Report by Program Area Summer - Curry

Program Area		02/SU	03/SU	04/SU	05/SU	06/SU	07/SU	08/SU	09/SU	10/SU
Associate Arts - Oregon Transfer	Headcount Percent	5.60%	2.69%	3.60%	2.65%	4.95%	6.76%	10.78%	10.03%	12.18%
	Student Headcount	27.0	12.0	10.0	10.0	21.0	25.0	33.0	34.0	43.0
Associate Science Degrees	Headcount Percent	1.04%	0.90%	1.44%	1.06%	1.65%	0.81%	0.65%	0.88%	0.57%
	Student Headcount	5.0	4.0	4.0	4.0	7.0	3.0	2.0	3.0	2.0
Associate General Science	Headcount Percent				0.53%		0.54%	0.33%	0.59%	
	Student Headcount				2.0		2.0	1.0	2.0	
Associate Applied Science	Headcount Percent	2.49%	1.35%	3.60%	3.98%	2.12%	2.97%	6.54%	7.08%	5.10%
	Student Headcount	12.0	6.0	10.0	15.0	9.0	11.0	20.0	24.0	18.0
Dual Admit Four Year Schools	Headcount Percent	1.66%	2.02%	1.80%	0.80%		0.27%			0.28%
	Student Headcount	8.0	9.0	5.0	3.0		1.0			1.0
Certificates One Year	Headcount Percent	1.87%	1.57%	1.44%	2.39%	1.18%	0.27%	0.33%	1.47%	1.13%
	Student Headcount	9.0	7.0	4.0	9.0	5.0	1.0	1.0	5.0	4.0
Certificates Less than One Year	Headcount Percent	0.41%	0.67%		0.27%			0.98%	0.29%	0.57%
	Student Headcount	2.0	3.0		1.0			3.0	1.0	2.0
TO Specialized Certificates	Headcount Percent	0.41%	0.22%							0.28%
	Student Headcount	2.0	1.0							1.0
Employee Skills Training & Job Skills	Headcount Percent			0.36%		0.24%				0.28%
	Student Headcount			1.0		1.0				1.0
BDC Seminar & Target Custom	Headcount Percent	0.21%	0.22%							
	Student Headcount	1.0	1.0							
Adult Basic Education & GED	Headcount Percent	2.49%	1.12%		0.27%	0.94%		0.65%	1.18%	0.57%
	Student Headcount	12.0	5.0		1.0	4.0		2.0	4.0	2.0
Adult High School Diploma	Headcount Percent						0.27%			
	Student Headcount						1.0			
English Second Language	Headcount Percent	2.70%	5.61%	2.52%	1.33%	0.47%	0.27%	0.65%	0.88%	
	Student Headcount	13.0	25.0	7.0	5.0	2.0	1.0	2.0	3.0	
Non Degree Seeking	Headcount Percent	81.12%	83.63%	85.25%	86.74%	88.44%	87.84%	79.08%	77.58%	79.04%
	Student Headcount	391.0	373.0	237.0	327.0	375.0	325.0	242.0	263.0	279.0
Grand Total	Headcount Percent	100.00%	100.00%	100.00%	100.00%	100.00%	100.00%	100.00%	100.00%	100.00%
	Student Headcount	482.0	446.0	278.0	377.0	424.0	370.0	306.0	339.0	353.0