



Theme: ***Students First!***

Vision: *Southwestern Leads and Inspires Lifelong Learning*

Mission: *Southwestern Provides Quality Learning Opportunities!*

**SOUTHWESTERN**  
Oregon Community College

**Measure of Achievement 7**  
**Course Data Reports**  
**Fall Term 2010**

**Presented By:** Tom Nicholls, Executive Director of Enrollment Services

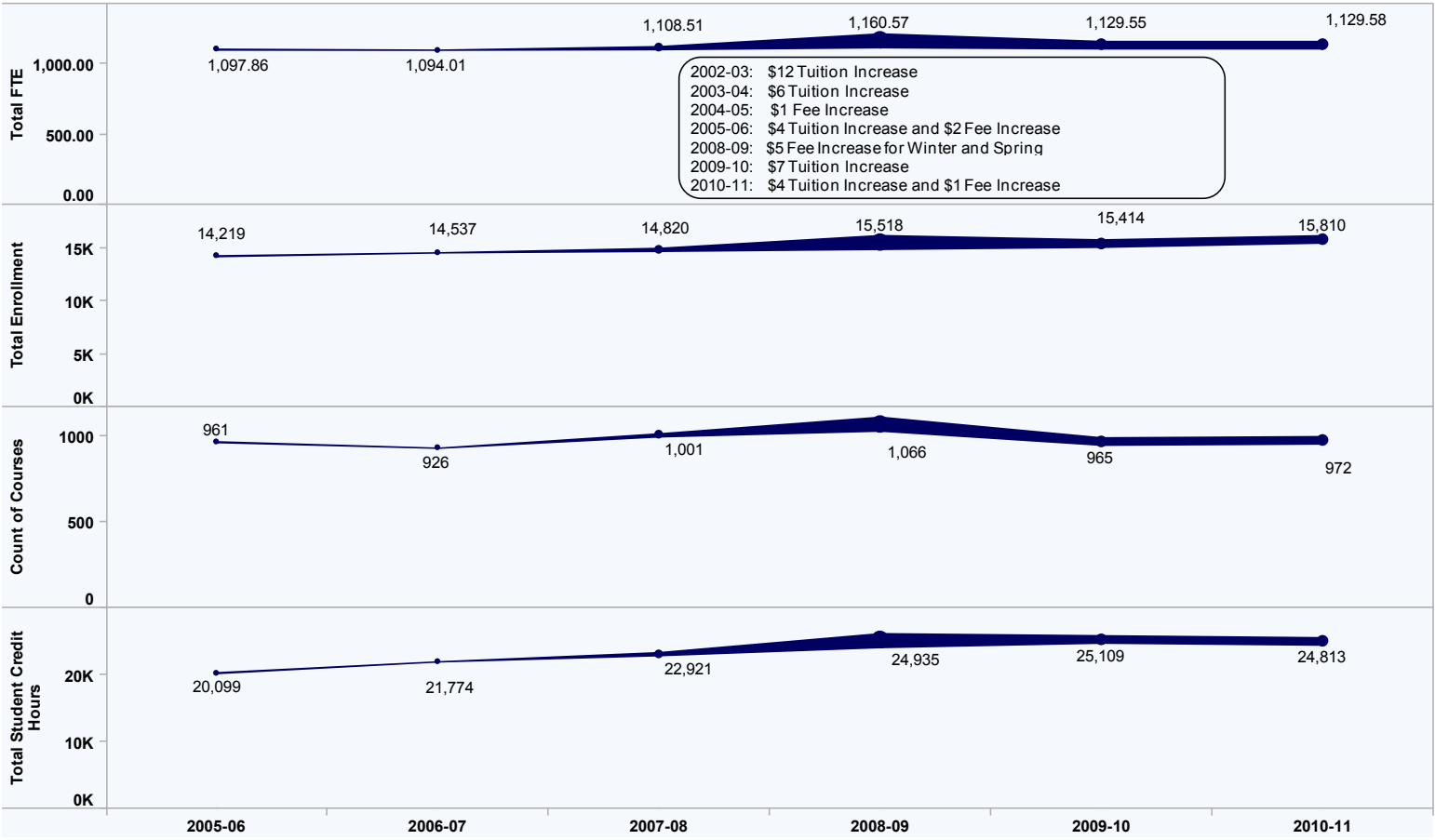
**Date Presented:** February 28, 2011, Board of Education Meeting

<b>Purpose</b>	This report supports the analysis of course data allowing for a careful review of FTE associated with courses and changing course enrollment patterns as well as tracking course information by location.
<b>Achievement Overview and Analysis</b>	Review and analysis of the data reveals an increase of 11% in FTE for Curry for Fall 2010 and a continued increase of nearly 30% in FTE from E-Learning courses.
<b>Core Theme and Objective</b>	<b>Access:</b> Access to multiple learning opportunities <b>Community Engagement:</b> Community engagement in diverse activities and events
<b>Southwestern Strategic Plan Goal Results and Achievement</b>	<b>Goals 1 and 8:</b> Curry and E-Learning course FTE and enrollments experienced the largest increases during fall term. This supports activities associated with this goal to increase enrollment and to expand access to educational opportunities for students and support community engagement learning opportunities.
<b>Accreditation, Federal, State, Audit and Other Reporting Requirements</b>	<b>Accreditation Standard:</b> Standard One and Standard Five <b>State Reporting:</b> OCCURS data submission submitted timely and error free.
<b>Budget Impact and Budgetary Considerations</b>	Due to increases in enrollment in eLearning courses, additional resources need to be devoted to eLearning to enhance course quality and provide development opportunities for instructors.  It is evident that increased attention to strategic planning and course offerings in Curry County has stopped the downward trend in enrollment and FTE.
<b>Documentation and Process for Measure Data</b>	<b>Measure Number:</b> Measure 7 – Course Data: Enrollment, FTE, Course Count and Credit Hours <b>Documentation Posted:</b> SOCC Measures of Achievement Website at <a href="http://www.socc.edu/ie/pgs/research/measures/index.shtml">http://www.socc.edu/ie/pgs/research/measures/index.shtml</a> TracDat Assessment Software: Strategic Plan Documents: Measures of Achievement Folder <b>Data References:</b> OCCURS data extraction of the course data elements Tableau Workbook: Course Data

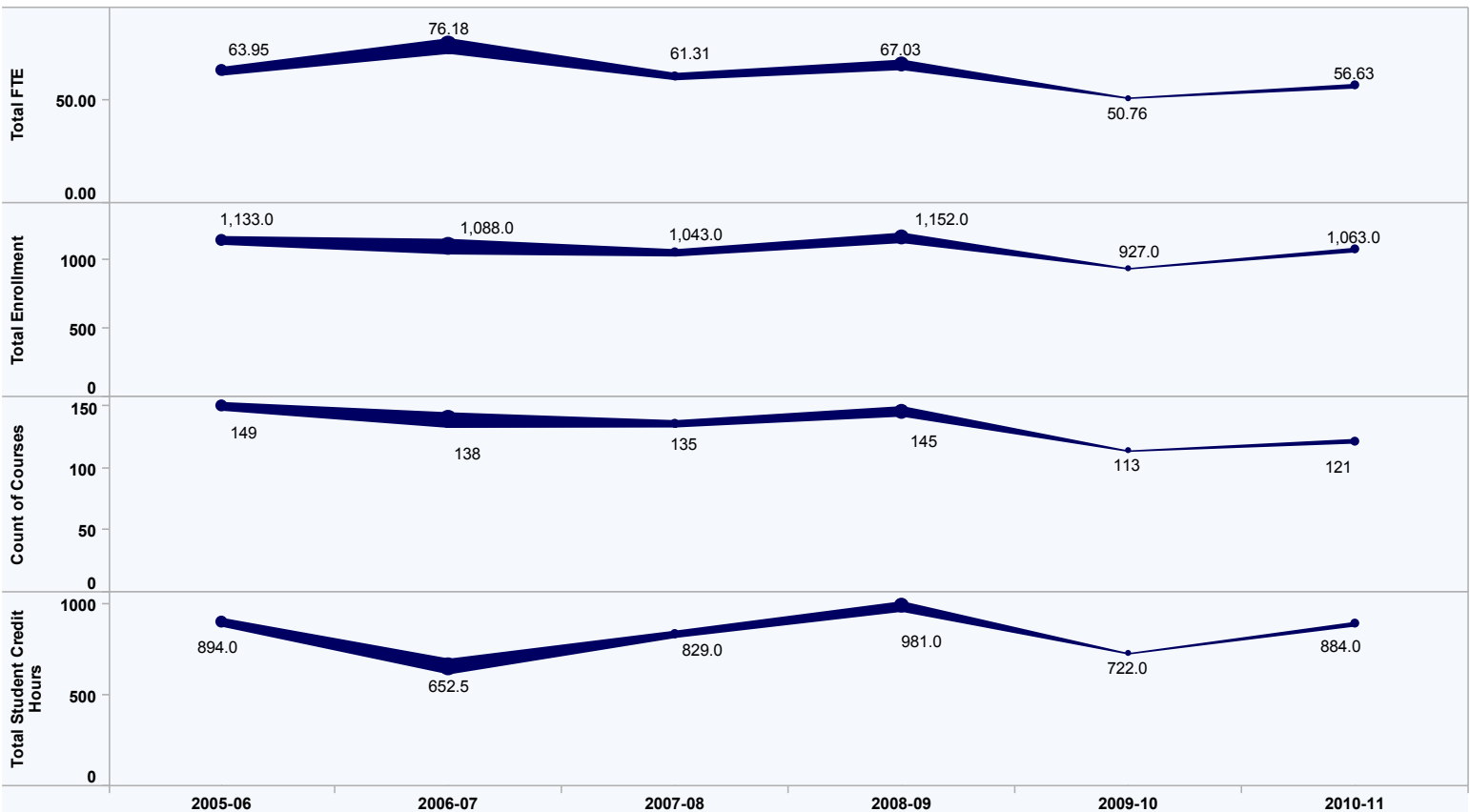


# Southwestern Oregon Community College Measures of Achievement MA 7: Course FTE, Enrollment, Course Count and Credit Hours Fall Term

## College Information



## Curry County Information





**Southwestern Oregon Community College**  
**Measures of Achievement**  
**MA 7A: Course Data by Reimbursement Category**  
**Fall Term**

**College Overview**

		2005-06	2006-07	2007-08	2008-09	2009-10	2010-11
<b>Lower Division Collegiate</b>	<b>Total FTE</b>	393.49	418.12	446.14	464.26	442.81	434.84
	<b>Total Student Credit Hours</b>	13,555	14,182	15,611	16,278	15,458	15,003
	<b>Count of Courses</b>	388	373	415	456	407	394
	<b>Total Enrollment</b>	4,785	5,087	5,492	5,726	5,493	5,491
<b>Postsecondary Remedial</b>	<b>Total FTE</b>	228.64	232.18	252.00	266.67	285.15	252.34
	<b>Total Student Credit Hours</b>	2,891	3,265	3,158	3,651	4,002	3,902
	<b>Count of Courses</b>	121	109	115	123	103	104
	<b>Total Enrollment</b>	3,220	3,260	3,186	3,506	3,664	3,220
<b>Vocational Preparation</b>	<b>Total FTE</b>	131.36	126.91	129.47	169.69	200.14	211.40
	<b>Total Student Credit Hours</b>	3,318	3,768	3,523	4,575	5,279	5,611
	<b>Count of Courses</b>	96	98	89	117	124	145
	<b>Total Enrollment</b>	896	1,114	993	1,243	1,417	1,578
<b>Vocational Supplemental</b>	<b>Total FTE</b>	132.67	125.68	98.30	50.16	40.79	59.44
	<b>Total Student Credit Hours</b>	244	440	530	152	320	297
	<b>Count of Courses</b>	148	145	171	161	147	131
	<b>Total Enrollment</b>	2,879	2,549	2,273	2,289	2,118	2,226
<b>Apprenticeship</b>	<b>Total FTE</b>				5.89		
	<b>Total Student Credit Hours</b>				222		
	<b>Count of Courses</b>				5		
	<b>Total Enrollment</b>				37		
<b>ABE</b>	<b>Total FTE</b>	84.20	66.93	54.47	61.84	33.41	18.05
	<b>Total Student Credit Hours</b>	0	0	0	0	0	0
	<b>Count of Courses</b>	39	41	37	41	28	12
	<b>Total Enrollment</b>	385	431	375	420	244	155
<b>ESL</b>	<b>Total FTE</b>	18.81	6.04	8.56	13.70	3.32	3.74
	<b>Total Student Credit Hours</b>	0	0	0	0	0	0
	<b>Count of Courses</b>	13	3	10	10	2	2
	<b>Total Enrollment</b>	109	32	38	64	23	21
<b>GED</b>	<b>Total FTE</b>						39.76
	<b>Total Student Credit Hours</b>						0
	<b>Count of Courses</b>						28
	<b>Total Enrollment</b>						299
<b>High School Credit Recovery</b>	<b>Total FTE</b>						2.78
	<b>Total Student Credit Hours</b>						0
	<b>Count of Courses</b>						2
	<b>Total Enrollment</b>						13
<b>Adult Continuing Education</b>	<b>Total FTE</b>	95.73	108.04	103.36	118.59	28.89	29.19
	<b>Total Student Credit Hours</b>	91	119	100	58	50	0
	<b>Count of Courses</b>	117	120	114	112	42	39
	<b>Total Enrollment</b>	1,356	1,559	1,713	1,734	823	1,346
<b>Adult Continuing Education Safety</b>	<b>Total FTE</b>					67.17	66.14
	<b>Total Student Credit Hours</b>					0	0
	<b>Count of Courses</b>					63	86
	<b>Total Enrollment</b>					1,088	1,081
<b>Adult Continuing Education Other</b>	<b>Total FTE</b>					17.25	2.32
	<b>Total Student Credit Hours</b>					0	0
	<b>Count of Courses</b>					8	2
	<b>Total Enrollment</b>					100	46
<b>Non Reimbursable Health</b>	<b>Total FTE</b>					8.06	7.44
	<b>Total Student Credit Hours</b>					0	0
	<b>Count of Courses</b>					31	18
	<b>Total Enrollment</b>					305	206
<b>Non Reimbursable</b>	<b>Total FTE</b>	12.97	10.10	16.20	9.76	2.56	2.13
	<b>Total Student Credit Hours</b>	0	0	0	0	0	0
	<b>Count of Courses</b>	39	37	50	41	10	9
	<b>Total Enrollment</b>	589	505	750	499	139	128
<b>Grand Total</b>	<b>Total FTE</b>	<b>1,097.86</b>	<b>1,094.01</b>	<b>1,108.51</b>	<b>1,160.57</b>	<b>1,129.55</b>	<b>1,129.58</b>
	<b>Total Student Credit Hours</b>	<b>20,099</b>	<b>21,774</b>	<b>22,921</b>	<b>24,935</b>	<b>25,109</b>	<b>24,813</b>
	<b>Count of Courses</b>	<b>961</b>	<b>926</b>	<b>1,001</b>	<b>1,066</b>	<b>965</b>	<b>972</b>
	<b>Total Enrollment</b>	<b>14,219</b>	<b>14,537</b>	<b>14,820</b>	<b>15,518</b>	<b>15,414</b>	<b>15,810</b>



**Southwestern Oregon Community College**  
**Measures of Achievement**  
**MA 7A: Course Data by Reimbursement Category**  
**Fall Term**

		Curry Campus					
		2005-06	2006-07	2007-08	2008-09	2009-10	2010-11
<b>Lower Division Collegiate</b>	Total FTE	20.91	14.02	14.97	20.41	16.05	19.79
	Total Enrollment	275	194	229	271	199	269
	Count of Courses	43	35	35	38	28	26
	Total Student Credit Hours	612	409	478	686	487	643
<b>Postsecondary Remedial</b>	Total FTE	13.18	7.53	12.63	9.37	7.66	9.87
	Total Enrollment	217	148	228	185	156	189
	Count of Courses	29	23	26	24	22	23
	Total Student Credit Hours	191	87	223	157	159	131
<b>Vocational Preparation</b>	Total FTE	3.01	3.81	2.45	4.92	2.68	4.18
	Total Enrollment	34	20	32	33	14	39
	Count of Courses	10	7	9	12	5	10
	Total Student Credit Hours	76	95	64	119	62	110
<b>Vocational Supplemental</b>	Total FTE	4.01	30.31	12.41	6.88	2.67	2.12
	Total Enrollment	74	327	105	165	104	143
	Count of Courses	12	27	16	22	17	19
	Total Student Credit Hours	9	18	51	0	0	0
<b>ABE</b>	Total FTE	2.24	4.91	3.05	6.63	5.86	5.23
	Total Enrollment	29	59	45	94	84	74
	Count of Courses	4	6	6	6	6	6
	Total Student Credit Hours	0	0	0	0	0	0
<b>ESL</b>	Total FTE	4.23	1.81	0.49	0.77	0.77	0.35
	Total Enrollment	60	20	7	11	11	5
	Count of Courses	7	2	3	1	1	1
	Total Student Credit Hours	0	0	0	0	0	0
<b>GED</b>	Total FTE						2.05
	Total Enrollment						29
	Count of Courses						6
	Total Student Credit Hours						0
<b>Adult Continuing Education</b>	Total FTE	14.31	12.50	13.54	15.79	3.27	3.46
	Total Enrollment	327	266	266	308	107	118
	Count of Courses	36	32	27	33	13	13
	Total Student Credit Hours	6	44	13	19	14	0
<b>Adult Continuing Education Safety</b>	Total FTE					9.25	7.48
	Total Enrollment					158	121
	Count of Courses					14	10
	Total Student Credit Hours					0	0
<b>Non Reimbursable Health</b>	Total FTE					1.16	1.04
	Total Enrollment					32	22
	Count of Courses					3	3
	Total Student Credit Hours					0	0
<b>Non Reimbursable</b>	Total FTE	2.05	1.30	1.76	2.25	1.39	1.07
	Total Enrollment	117	54	131	85	62	54
	Count of Courses	8	6	13	9	4	4
	Total Student Credit Hours	0	0	0	0	0	0
<b>Grand Total</b>	Total FTE	<b>63.95</b>	<b>76.18</b>	<b>61.31</b>	<b>67.03</b>	<b>50.76</b>	<b>56.63</b>
	Total Enrollment	<b>1,133</b>	<b>1,088</b>	<b>1,043</b>	<b>1,152</b>	<b>927</b>	<b>1,063</b>
	Count of Courses	<b>149</b>	<b>138</b>	<b>135</b>	<b>145</b>	<b>113</b>	<b>121</b>
	Total Student Credit Hours	<b>894</b>	<b>653</b>	<b>829</b>	<b>981</b>	<b>722</b>	<b>884</b>



**Southwestern Oregon Community College**  
**Measures of Achievement**  
**MA 7B: Course Data by Location - FTE, Enrollment, Course Count and Credits**  
**Fall Term**

		2005-06	2006-07	2007-08	2008-09	2009-10	2010-11
<b>Main Campus</b>	<b>Total FTE</b>	680.60	713.73	691.44	736.85	747.34	696.80
	<b>Total Enrollment</b>	8,005	8,665	8,039	8,718	9,083	8,298
	<b>Count of Courses</b>	441	424	464	512	456	468
	<b>Total Student Credit Hours</b>	14,930	15,792	15,195	15,767	16,734	15,919
<b>Curry Campus</b>	<b>Total FTE</b>	63.95	76.18	61.31	67.03	50.76	56.63
	<b>Total Enrollment</b>	1,133	1,088	1,043	1,152	927	1,063
	<b>Count of Courses</b>	149	138	135	145	113	121
	<b>Total Student Credit Hours</b>	894	653	829	981	722	884
<b>OCCI</b>	<b>Total FTE</b>	61.64	54.68	58.61	81.84	111.97	72.94
	<b>Total Enrollment</b>	306	479	370	591	734	505
	<b>Count of Courses</b>	21	31	18	27	36	32
	<b>Total Student Credit Hours</b>	1,460	1,617	1,508	2,225	2,887	2,081
<b>E-Learning</b>	<b>Total FTE</b>	53.84	71.59	81.12	77.09	88.76	125.77
	<b>Total Enrollment</b>	718	990	1,127	995	1,182	2,047
	<b>Count of Courses</b>	73	80	83	82	89	93
	<b>Total Student Credit Hours</b>	2,248	3,007	3,376	3,102	3,697	4,394
<b>Off Campus</b>	<b>Total FTE</b>	198.59	150.57	193.68	180.83	130.72	159.96
	<b>Total Enrollment</b>	3,902	3,130	4,098	3,952	3,488	3,795
	<b>Count of Courses</b>	269	241	292	291	271	250
	<b>Total Student Credit Hours</b>	567	705	2,013	2,860	1,069	1,535
<b>Shutter's Creek</b>	<b>Total FTE</b>	39.25	27.10	22.34	16.93		17.49
	<b>Total Enrollment</b>	155	166	143	110		102
	<b>Count of Courses</b>	8	10	9	9		8
	<b>Total Student Credit Hours</b>	0	0	0	0		0
<b>Other</b>	<b>Total FTE</b>		0.17				
	<b>Total Enrollment</b>		19				
	<b>Count of Courses</b>		2				
	<b>Total Student Credit Hours</b>		0				
<b>Grand Total</b>	<b>Total FTE</b>	<b>1,097.86</b>	<b>1,094.01</b>	<b>1,108.51</b>	<b>1,160.57</b>	<b>1,129.55</b>	<b>1,129.58</b>
	<b>Total Enrollment</b>	<b>14,219</b>	<b>14,537</b>	<b>14,820</b>	<b>15,518</b>	<b>15,414</b>	<b>15,810</b>
	<b>Count of Courses</b>	<b>961</b>	<b>926</b>	<b>1,001</b>	<b>1,066</b>	<b>965</b>	<b>972</b>
	<b>Total Student Credit Hours</b>	<b>20,099</b>	<b>21,774</b>	<b>22,921</b>	<b>24,935</b>	<b>25,109</b>	<b>24,813</b>



# Southwestern Oregon Community College

## Measures of Achievement

### MA 7C: Course Data by Instructional Area

#### Fall Term

#### College Information

		2005-06	2006-07	2007-08	2008-09	2009-10	2010-11
<b>Allied Health</b>	Total FTE	10.64	11.91	15.21	24.89	27.70	42.21
	Total Enrollment	126	155	191	257	281	420
	Count of Courses	7	9	14	19	23	28
	Total Student Credit Hours	430	506	646	980	1,047	1,431
<b>Apprenticeship</b>	Total FTE			6.69	5.89		
	Total Enrollment			44	37		
	Count of Courses			6	5		
	Total Student Credit Hours			0	222		
<b>Arts &amp; Letters</b>	Total FTE	151.11	166.89	170.50	169.70	165.46	180.34
	Total Enrollment	2,286	2,554	2,611	2,544	2,534	3,004
	Count of Courses	168	183	179	196	176	160
	Total Student Credit Hours	4,887	5,413	5,750	5,642	5,570	5,691
<b>Business, Accounting, Economics &amp; Marketing</b>	Total FTE	39.99	43.68	43.04	42.28	37.89	34.09
	Total Enrollment	450	503	478	471	449	388
	Count of Courses	48	35	40	45	41	38
	Total Student Credit Hours	1,547	1,723	1,640	1,620	1,448	1,312
<b>Community Miscellaneous</b>	Total FTE	5.29	6.92	6.13	3.08	3.45	2.35
	Total Enrollment	363	462	417	224	132	149
	Count of Courses	24	21	44	14	14	12
	Total Student Credit Hours	0	0	0	0	27	0
<b>Computer Science</b>	Total FTE	58.96	56.00	57.32	58.12	49.51	54.45
	Total Enrollment	1,046	975	1,014	1,059	914	885
	Count of Courses	57	54	55	58	48	50
	Total Student Credit Hours	1,112	903	1,152	1,002	983	871
<b>Culinary</b>	Total FTE	58.70	57.84	61.51	69.99	107.85	101.16
	Total Enrollment	294	650	492	523	743	552
	Count of Courses	22	36	24	32	42	37
	Total Student Credit Hours	1,316	1,823	1,599	1,700	2,702	2,392
<b>Education &amp; Early Childhood</b>	Total FTE	118.94	120.13	152.33	154.36	167.92	131.61
	Total Enrollment	1,469	1,512	1,500	1,690	1,688	1,385
	Count of Courses	51	52	57	51	44	41
	Total Student Credit Hours	302	258	405	396	347	283
<b>Environmental &amp; Horticulture</b>	Total FTE	3.02	2.54	5.47	4.18	2.87	0.50
	Total Enrollment	46	27	71	61	28	58
	Count of Courses	8	5	8	11	9	6
	Total Student Credit Hours	72	76	172	130	81	0
<b>Fire Science</b>	Total FTE	27.11	20.53	22.15	21.01	23.48	20.05
	Total Enrollment	597	457	456	476	498	381
	Count of Courses	40	31	36	32	33	28
	Total Student Credit Hours	375	264	314	247	278	314
<b>Manufacturing, Welding, Fabrication &amp; Industrial</b>	Total FTE	15.59	15.27	16.42	23.24	21.05	22.73
	Total Enrollment	149	134	141	197	180	208
	Count of Courses	15	17	13	16	18	21
	Total Student Credit Hours	349	365	407	587	539	592
<b>Math, Engineering &amp; Physics</b>	Total FTE	74.07	75.81	86.35	101.32	97.42	88.99
	Total Enrollment	809	808	927	1,096	1,093	959
	Count of Courses	70	67	77	88	73	73
	Total Student Credit Hours	3,019	3,108	3,491	4,123	3,828	3,668
<b>Nursing</b>	Total FTE	24.98	25.81	22.92	28.89	26.45	23.74
	Total Enrollment	116	95	58	70	62	56
	Count of Courses	11	9	7	9	8	8
	Total Student Credit Hours	571	605	518	624	558	504
<b>Physical &amp; Health Education</b>	Total FTE	108.07	121.08	120.32	125.37	141.04	149.64
	Total Enrollment	1,535	1,821	1,893	2,005	2,264	2,320
	Count of Courses	144	147	152	157	164	192
	Total Student Credit Hours	1,081	1,299	1,464	1,239	1,505	1,761
<b>Professional Development &amp; Workforce</b>	Total FTE	50.17	34.30	37.55	41.79	21.65	8.05
	Total Enrollment	414	394	720	669	635	677
	Count of Courses	42	40	54	44	26	25
	Total Student Credit Hours	0	0	0	0	0	0
<b>Sciences</b>	Total FTE	61.04	67.55	68.42	79.10	72.57	76.17
	Total Enrollment	725	655	921	818	716	725
	Count of Courses	39	36	40	46	39	41
	Total Student Credit Hours	1,863	2,070	1,946	2,312	2,102	2,199
<b>Small Business Administration</b>	Total FTE	22.37	31.35	10.40	17.69	0.99	19.64
	Total Enrollment	106	336	60	101	139	144
	Count of Courses	10	8	6	19	13	19
	Total Student Credit Hours	0	0	0	0	0	0
<b>Social Sciences</b>	Total FTE	81.31	97.45	87.85	100.33	107.55	88.42
	Total Enrollment	1,236	1,390	1,351	1,528	1,742	1,821
	Count of Courses	72	71	74	93	81	86
	Total Student Credit Hours	2,909	3,067	3,225	3,877	3,804	3,498
<b>Transitional Education</b>	Total FTE	186.49	138.95	117.96	89.32	54.70	85.46
	Total Enrollment	2,452	1,609	1,475	1,692	1,316	1,678
	Count of Courses	133	105	115	131	113	107
	Total Student Credit Hours	267	294	192	234	290	297
<b>Grand Total</b>	Total FTE	1,097.86	1,094.01	1,108.51	1,160.57	1,129.55	1,129.58
	Total Enrollment	14,219	14,537	14,820	15,518	15,414	15,810
	Count of Courses	961	926	1,001	1,066	965	972
	Total Student Credit Hours	20,099	21,774	22,921	24,935	25,109	24,813



**Southwestern Oregon Community College**  
**Measure of Achievement**  
**MA 7C: Course Data by Instructional Area - FTE, Enrollment, Course Count and Credits**  
**Fall Term**

**Curry County Information**

		2005-06	2006-07	2007-08	2008-09	2009-10	2010-11
<b>Arts &amp; Letters</b>	Total FTE	13.56	11.65	11.12	11.41	8.05	7.34
	Total Enrollment	224	204	190	193	149	135
	Count of Courses	25	28	19	20	16	10
	Total Student Credit Hours	332	276	314	324	191	194
<b>Business, Accounting, Economics &amp; Marketing</b>	Total FTE	3.00	0.82	1.41	2.31	1.18	1.11
	Total Enrollment	33	9	16	25	13	12
	Count of Courses	13	6	7	10	6	7
	Total Student Credit Hours	113	33	49	77	36	39
<b>Community Miscellaneous</b>	Total FTE	0.56	0.22	0.65	0.29	0.39	0.61
	Total Enrollment	51	13	60	17	13	48
	Count of Courses	4	3	9	2	3	4
	Total Student Credit Hours	0	0	0	0	0	0
<b>Computer Science</b>	Total FTE	6.31	6.68	7.44	5.05	4.83	6.82
	Total Enrollment	171	185	187	159	155	167
	Count of Courses	18	20	18	15	15	18
	Total Student Credit Hours	40	21	46	15	44	34
<b>Culinary</b>	Total FTE			0.07			
	Total Enrollment			6			
	Count of Courses			1			
	Total Student Credit Hours			0			
<b>Education &amp; Early Childhood</b>	Total FTE	0.45	0.24	0.14	2.00	2.55	1.82
	Total Enrollment	21	11	6	75	71	56
	Count of Courses	5	3	2	8	10	8
	Total Student Credit Hours	5	1	1	0	0	0
<b>Environmental &amp; Horticulture</b>	Total FTE	0.21	0.04	0.14	0.08		0.12
	Total Enrollment	24	5	17	9		14
	Count of Courses	3	1	3	2		1
	Total Student Credit Hours	0	0	0	0		0
<b>Manufacturing, Welding, Fabrication &amp; Industrial</b>	Total FTE		0.24				
	Total Enrollment		2				
	Count of Courses		2				
	Total Student Credit Hours		6				
<b>Math, Engineering &amp; Physics</b>	Total FTE	7.07	4.28	6.86	7.37	5.27	4.73
	Total Enrollment	97	58	89	96	67	66
	Count of Courses	25	23	22	28	19	19
	Total Student Credit Hours	205	111	167	180	152	116
<b>Nursing</b>	Total FTE	1.96	3.27	1.31	3.57	1.79	2.54
	Total Enrollment	6	10	4	10	4	6
	Count of Courses	1	1	1	2	1	1
	Total Student Credit Hours	48	80	32	84	36	54
<b>Physical &amp; Health Education</b>	Total FTE	12.50	10.60	12.82	13.61	10.44	8.95
	Total Enrollment	237	373	221	230	180	149
	Count of Courses	25	29	23	21	18	14
	Total Student Credit Hours	17	24	58	7	6	6
<b>Professional Development &amp; Workforce</b>	Total FTE	2.81		0.02	0.17		
	Total Enrollment	28		2	14		
	Count of Courses	2		1	4		
	Total Student Credit Hours	0		0	0		
<b>Sciences</b>	Total FTE	3.93	2.96	2.84	5.68	7.39	7.67
	Total Enrollment	54	54	75	84	99	95
	Count of Courses	5	5	6	7	6	6
	Total Student Credit Hours	101	71	61	159	200	202
<b>Small Business Administration</b>	Total FTE	3.08	27.57	10.07	4.36	0.44	1.30
	Total Enrollment	42	45	30	56	44	72
	Count of Courses	5	4	4	10	7	8
	Total Student Credit Hours	0	0	0	0	0	0
<b>Social Sciences</b>	Total FTE	1.22	0.71	1.81	3.17	1.34	4.99
	Total Enrollment	42	10	39	45	19	84
	Count of Courses	4	1	3	5	3	6
	Total Student Credit Hours	21	30	77	135	57	212
<b>Transitional Education</b>	Total FTE	7.30	6.91	4.61	7.93	7.09	8.63
	Total Enrollment	103	109	101	139	113	159
	Count of Courses	14	12	16	11	9	19
	Total Student Credit Hours	12	0	24	0	0	27
<b>Grand Total</b>	Total FTE	<b>63.95</b>	<b>76.18</b>	<b>61.31</b>	<b>67.03</b>	<b>50.76</b>	<b>56.63</b>
	Total Enrollment	<b>1,133</b>	<b>1,088</b>	<b>1,043</b>	<b>1,152</b>	<b>927</b>	<b>1,063</b>
	Count of Courses	<b>149</b>	<b>138</b>	<b>135</b>	<b>145</b>	<b>113</b>	<b>121</b>
	Total Student Credit Hours	<b>894</b>	<b>653</b>	<b>829</b>	<b>981</b>	<b>722</b>	<b>884</b>