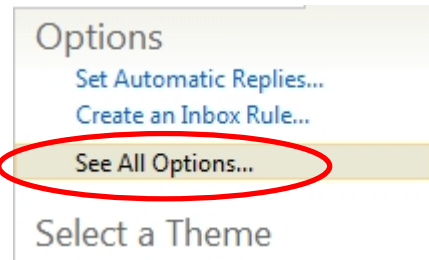


How to Change your Student E-Mail Password in Outlook Live

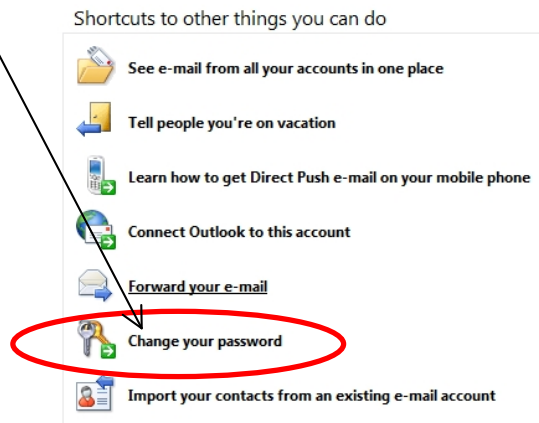
From the Outlook Live Homepage, Select the Options menu



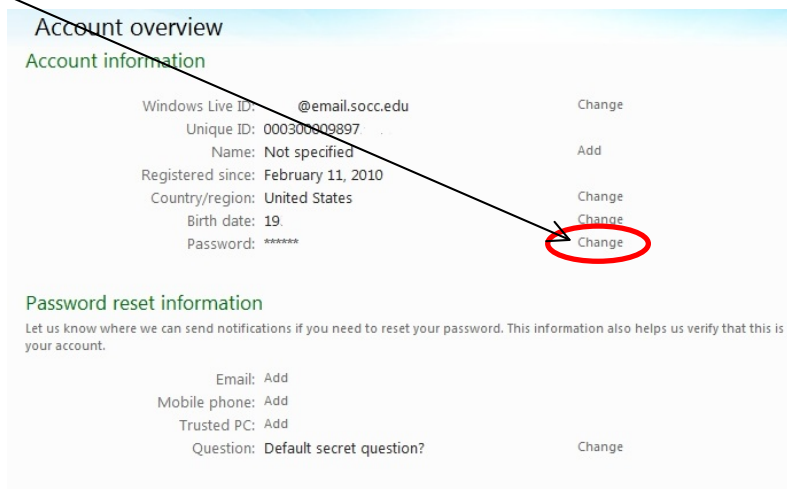
Select See All Options...



Select Change your password



Select Change



First type in the your old password

Change your password

Account ▶ Password

A strong password helps prevent unauthorized access to your email account.

Windows Live ID: @email.socc.edu

Old password:

[Forgot your password?](#)

Type new password:

6-character minimum; case sensitive

Password strength: Medium

Retype new password:

Make my password expire every 72 days

Type in your new password

Then Select Save