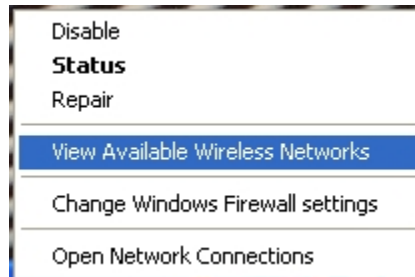


## Instructions for the login procedure onto the college Student wireless network

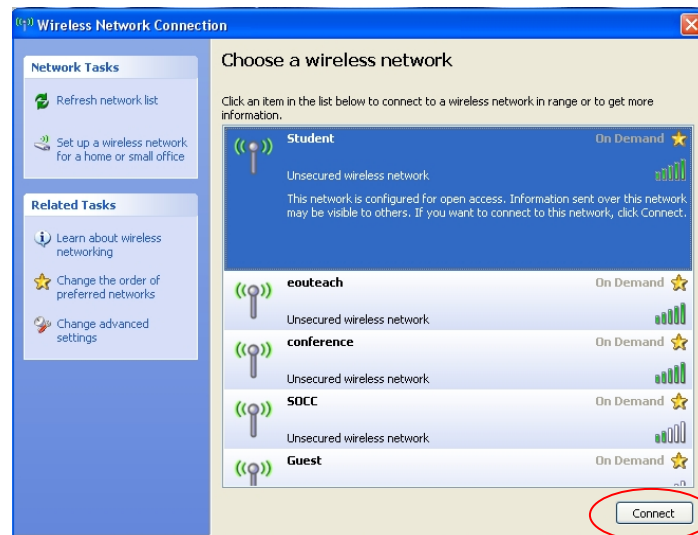
Right click on the wireless network Icon.



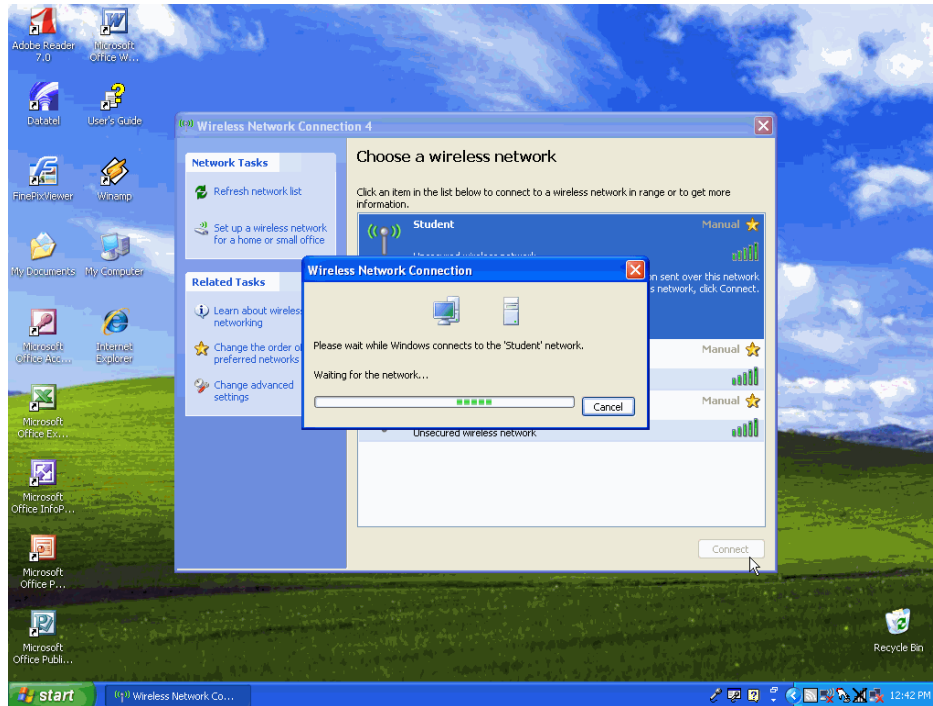
Click on **View Available Wireless Networks**



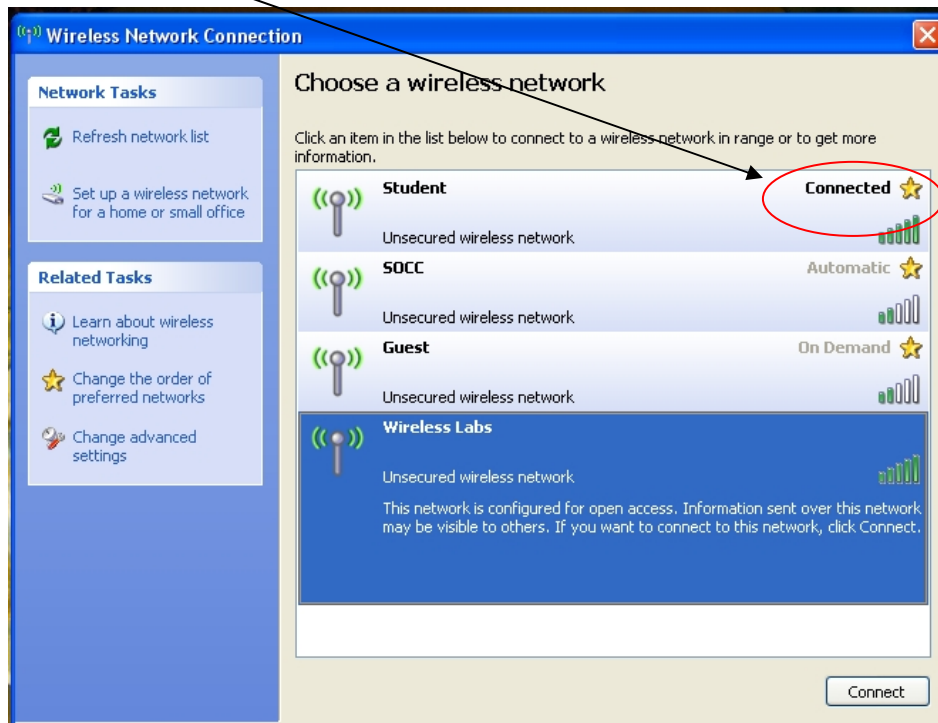
Select **Student** then Click **Connect**.



You will get the Please wait screen.



Shows **Connected**.



Now open your Browser.



Use your WebAdvisor ID as your Network Username and your six digit date of birth for your password, and then click **Submit**.

A screenshot of a network login form. The form is set against a background of a white padlock and a chain. It contains two input fields: 'Network Username:' with the text 'WebAdvisor ID' entered, and 'Password:' with six black dots. Below the fields is a blue 'Submit' button.

You will be directed to the **Network Usage** page. You are now connected to the network.

