



CARE CONNECTIONS

Child Care Resource & Referral



HAPPY SUMMER!!!

Here is a shout out to everyone that attended the 25th Annual Retreat by the Lake! Erin Ramsey shared an inspiring message; "Show Up & Shine Bright." We *Ebbbed & Flowed*, enjoyed connecting with each other, and participated in fun and informative trainings.



**Our very own Ana Lugo-Ferrin
has accepted the Infant/Toddler
Specialist position!!**

See page #3 for more about Ana.



**VISIT US ON
FACEBOOK:**

<https://www.facebook.com/CARE-Connections-CCRR-CoosCurry-105433120792959>

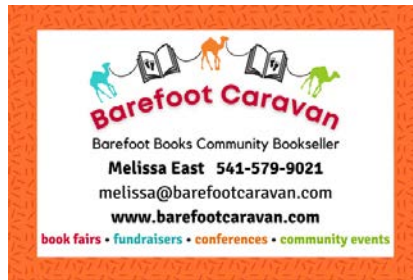


INSTAGRAM:

[Look us up!](#)
care_connections_socc



THANK YOU TO OUR SPONSORS!!!



"SHOW UP AND SHINE BRIGHT!"

Erin Ramsey ~ Author, Speaker & Lavender Farmer



**CARE
CONNECTIONS**

MEET THE NEW INFANT/TODDLER SPECIALIST

Hi!

I am Ana Lugo-Ferrin; most of you know me as a Quality Specialist for CARE Connections for the last almost 4 years... WOW time flies!

Now, I have the opportunity to work with Baby Promise Early Learning Programs and providers as Infant/Toddler Education Specialist and I am excited about it. Like with any new position, there is much to learn but I look forward to work with you.



A little about myself...I have worked as pre-k teacher, ESL teacher, Community Outreach for Healthy Families Oregon and QS for CARE Connections. Outside of work, I love nature, going for hikes, meeting with friends over a cup of coffee and catching up on life, etc. In addition, I try to visit my family in Puerto Rico and Texas as often as possible. This summer I'm trying to enjoy it as much as I can...you do the same.

Rural Early

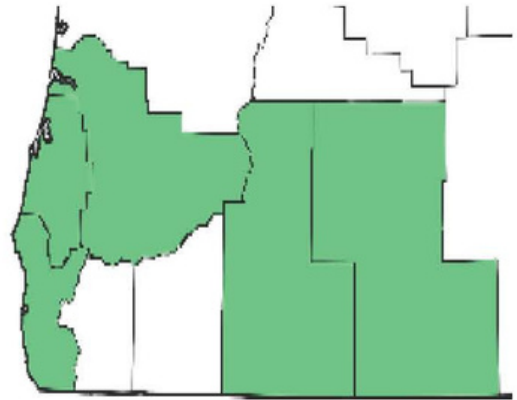
Learning Facility Improvement Project

Child Care Providers of Coos, Curry, Douglas, Klamath,
and Lake Counties...

You can get grant money to make capital
improvements in your program.

There are two funding tiers:

Tier 1 up to \$5000 and Tier 2 up to \$25,000.



What are the participation requirements?

1. Must live in Coos, Curry, Douglas, Klamath, and Lake County.
2. Be a licensed provider operating full-day/full-year or committed to becoming licensed.
3. Accept or be willing to accept children on subsidy and children with special needs.
4. Have a satisfactory compliance history.
5. Must use other local, state, and/or federal funds, if available, to complete their projects before they will be considered for this grant funding.

***Head Start, Early Head Start, and programs run by school districts are not eligible**

Who is providing the funds and why?

The Ford Family Foundation is offering grants in these counties to help childcare providers do one or more of the following:

1. Become licensed and serve more children.
2. Increase licensed capacity and serve more children.
3. Provide a safer, more appropriate, indoor and/or outdoor environment for children.

They have partnered with The Research Institute at Western Oregon University and your local CCR&R to administer the application process, provide assistance to programs, and distribute the funds.

What could the funds be spent on?

Indoor spaces – things like remodeling, adding a bathroom, increasing square footage, improving heating or air conditioning, and replacing windows.

Outdoor spaces – things like paving projects, adding an outdoor play area, covering a patio, building a fence, and making an outdoor interest area.

How to apply?

Any program meeting the minimum eligibility requirements can apply. Go to our website <https://oregonspark.org/early-educators/grants> or scan the QR code to begin the application process. This is a competitive process and funds are limited. Completion of application does not guarantee you get funded. For questions, call or email Nathan Winegardner project administrator at 503-838-9261



Western Oregon
UNIVERSITY
The Research Institute

Child Care Expansion Fund

Helping families get back to work



Are you a Child Care Provider in Coos, Curry or Douglas County whose enrollment has been affected by the COVID-19 Pandemic?

The Child Care Expansion Fund is available to help with the cost of hiring staff so that you can enroll more children in your program.

Eligibility Requirements

- Enrollment was negatively affected and/or teachers were lost as a byproduct of the COVID-19 pandemic.
- Maintain a caseload whereby at least 51% of families with children in the classroom supported by this funding meet low to moderate income requirements.

How to Apply

- Call South Coast Business at 800-974-4054 to get an application.
- Meet with the Early Learning Department Manager to review your application.



Attention Oregon Child Care Providers!



1

FILL OUT INTEREST FORM

Use your phone's camera to scan the QR code to access the link to the CCSO enrollment interest form

CLICK OR SCAN THE QR CODE!



2

CCSO ONBOARDING

Once the form is processed & eligibility is confirmed, CCSO will send providers the two-part onboarding process.

✓ CCSO Provider Orientation Video

✓ CCSO Liability & Onboarding Paperwork

3

SIGN-UP ON PORTAL!

After onboarding, providers will be ready to create an account on our portal, ChildCareMatters, and post jobs for substitutes!

In partnership with



Email us at: childcaresubsor@wou.edu with any questions!



Rating Renewal Updates

Changes are Coming to Spark!

Spark is undergoing some changes as it is being redesigned by Oregon's early educators and families. Find out more about the [Spark redesign here](#).

Starting October 1, 2023

- There will be self-selected quality improvement options for programs that do not wish to complete a portfolio. These options will not lead to a star-rating.
- To submit a portfolio and receive a star-rating, programs must be listed with DHS to serve families receiving DHS childcare subsidy. Find out more about becoming [DHS listed here](#).

What's Available	DHS Listed	Not DHS Listed
Spark Application and Commitment to Quality (C2Q)	✓	✓
Support Funds for Quality Improvements (\$1,000 – \$2,000 depending on program licensed capacity)	✓	✓
Portfolio Submission or Resubmission to Receive a Star-rating	✓	✗
NEW Self-selected Quality Improvement Options (starting 10/1/2023)	✓	✓
Star-rating Incentive Funds (\$500-\$3,000 depending on program licensed capacity & star level achieved)	✓	✗
Spark-rated DHS Monthly Incentive Payment (\$54, \$72, or \$90 for each full-time child depending on star level)	✓	✗
Rating Renewal	✓	✓

UPDATE YOUR INFORMATION

The Spark Program Update Report (SPUR) is used to update information and/or request an extension or a reinstatement of a star rating. It will also collect information about continuous quality improvement efforts, and your commitment to maintain quality standards. Completing this report annually is required for programs to remain eligible for future opportunities through Spark, such as additional funding.

Go to the [electronic version of the Spark Program Update Report](#).

ARE YOU A CURRENTLY WORKING EARLY EDUCATOR INTERESTED IN GETTING A DEGREE IN EARLY CHILDHOOD?



If so, we have scholarship opportunities for you!

In addition to enriching your classroom practice, college coursework is the fastest path toward becoming Lead Teacher qualified, reaching an Oregon Registry Step that will qualify your program for a Spark rating, or becoming Director qualified. Plus, you'll make friends in the early learning community working toward the same goals.

Apply to join our **Southern Oregon Early Learning Professional Development Consortium**, and receive scholarships for coursework and special professional development opportunities. We will work with you to find the classes you need and the supports that will help you be successful. You'll work within a cohort of other childcare providers as you progress toward your degree.

Contact Taya Noland at 541.888.7336 for more information.

www.socc.edu/education



SOUTHWESTERN
AN OREGON COMMUNITY COLLEGE

Childhood Education & Family Studies Program

FALL 2023-2024 ~ Registration is OPEN!

- ECE 102 01 & 102B 01 Theory and Practicum II Pre-K - (5 Credit) Online**

 10 HGD

 10 LEC

 10 OA
 Prerequisites: ECE 209 & 209B; Central Background Registry (CBR) check is required for this course.
 The third in a sequence of courses with a practicum co-requisite designed to assist students gaining experience working with young children in a laboratory or qualified preschool setting.
- ECE 150 01 Introduction and Observation - (4 Credit) Online**

 20 OA

 20 PPLD
 A beginning course focusing on the theoretical foundations, history and basic concepts of early childhood education.
- ECE 170 01 Health and Safety Early Childhood - (3 credit) Online**

 20 HSN
 This course covers health/safety practices recommended for the early childhood field and includes information on common diseases, health, and nutrition. Completion of First Aid & CPR for Infants and Children, and Reporting Child Abuse and Neglect Certification are required to pass this course.
- ECE 240 01 Lesson and Curriculum Planning - (3 Credit) Online**

 30 LEC
 Students will be introduced to various approaches to planning early childhood curriculum to meet the whole child's development. The course will review existing curriculum models, and students will develop theme based curriculum, units, lesson plans, and assessments in math, science, and social studies for young children.
- ED 135 01 Teaching Math to Young Children - (3 Credit) Online**

 30 LEC
 Young children live in a world full of mathematics! This curriculum course focuses on the pre-math concepts and early math concepts important for young children (pre-kindergarten through second grade) to grasp so they can be successful in math throughout their lives.
- ED 196 01 Overview of Student Special Needs - (3 Credit) Online**

 30 SN
 An introductory course covering categories of special needs and medical conditions that educators must be able to recognize and understand in order to plan, serve, and teach students effectively. Focuses on inclusion strategies and activities that enable educators to successfully provide an optimal educational environment for all students, including those with diverse abilities.
- ED 111 01 Career and College Readiness* - (3 Credit) HYBRID *Elective**
 This course focuses on preparing non-traditional students to enter college, training programs and/or employment. It helps students achieve their education and career goals by offering a variety of opportunities for students to identify and reflect on their strengths and interests. Aspects of this course are integrating prior knowledge with new information, improving vocabulary, reading skills, charts and tables and locating information. Wednesday's 11:00 AM-11:50 AM
- ED 216 01 Introduction to Education - (3 Credit) Online**
 This course introduces students to the historical, philosophical, and contemporary foundations of the American educational system.
- HDFS 225 01 Prenatal Infant and Toddler - (3 Credit) Online**

 30 HGD
 This course covers principles of theory and development beginning with conception through three years of age. Emphasis is placed on physical, intellectual, emotional, and social development of the young child, including a strong focus on early brain development.

What does Hybrid mean? A hybrid course is one that meets face-to-face and has an online component.



SOUTHWESTERN
AN OREGON COMMUNITY COLLEGE

Please check out our website at: <http://www.socc.edu/childhood>

Email us at ece@socc.edu

*ORO hours listed are subject to change, please check your Oregon Registry for final hours of credits after submission.



SOUTHWESTERN

AN OREGON COMMUNITY COLLEGE

CARE Connections, your local Child Care Resource & Referral serving Coos and Curry Counties, is a non-profit organization funded through the Oregon Early Learning Division. Our mission is to improve the quality of early learning experiences for young children by providing education, information and support to those that care for young children.

CARE Connections links families and Early Educators to each other and to other resources in the community. For early educator training, education, and program information, please call or email:

Coos Office: 541-888-7957

Curry Office: 541-813-1674

Toll-Free: 1-800-611-7555

Website: <https://www.socc.edu/for-the-community/care-connections/>

Southwestern Oregon Community College does not discriminate on the basis of race, color, gender, sexual orientation, marital status, religion, national origin, age, disability status, gender identity, or protected veterans in employment, education, or activities as set forth in compliance with federal and state statutes and regulations.



CARE Connections

Director

Taya Noland

541-888-7336

taya.noland@socc.edu

Program Manager

Danaye Gonzalez

541-888-7086

danaye.gonzalez@socc.edu

Preschool Promise Coach/QS

Natalie Lo

541-888-1622

natalie.lo@socc.edu

Infant/Toddler Specialist

Ana Lugo-Ferrin

541-888-7108

alugoferrin@socc.edu

Early Education Expansion Specialist

Jaimee Rice

541-888-7957

jaimee.rice@socc.edu

Baby Promise Grant Coordinator

Cari Pickett

541-888-7097

cari.pickett@socc.edu

CARE Connections

Toll-Free 1-800-611-7555

Child Care Referrals 211info.org

Email children@211info.org

USDA Food Program

OCDC 541-770-5893

