

CARE

Connections

Child Care Resource & Referral

It is hard to believe that it is the close of another year!

Care Connections CCR&R is pleased to be announcing two new staff joining our team. Please read pages 2 - 4 to learn more about Jessie and Amy, as well as the network opportunities available through their positions.

Check out page 6 to learn more about Child Care Substitutes of Oregon's (CCSO) fulltime bilingual substitute assigned to Coos & Curry; Anita Sanchez.

There are amply training opportunities. Please reach out anytime you are looking for something specific. We are here to help support your learning goals and may have alternative supports to offer.

Thank you for the important work you do.

SAVE-THE-DATE for Retreat by the Lake 2026; May 1-2, 2026

Have a happy
New Year!



Need help with FCCO/211?

Contact:

Cynthia Hoggatt

cynthia.hoggatt@socc.edu

541-888-7957

CARE CONNECTIONS STAFF UPDATE

JESSIE WILLIAMS

QUALITY IMPROVEMENT SPECIALIST

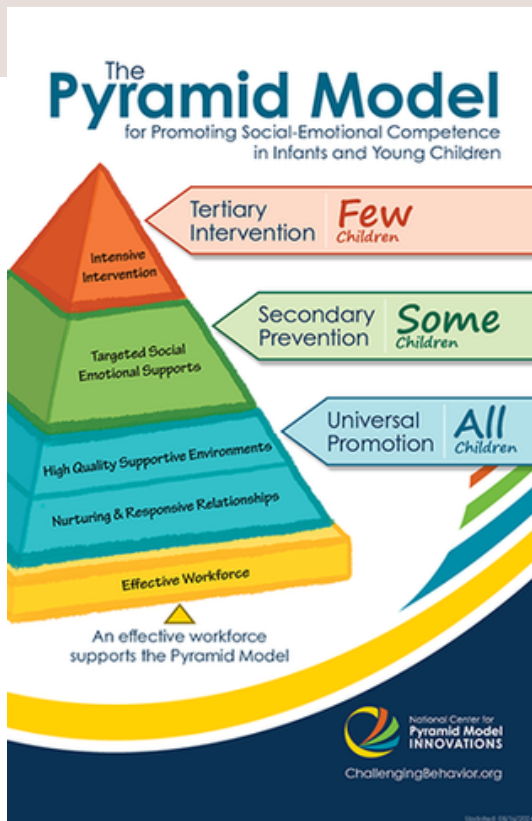


As a lifelong learner and teacher I am excited to start this new chapter in my life. I come to Care connections with experience as a teacher for all ages. Helping others has always been a big part of my life and I am excited to help teachers and young children get the resources they need to succeed. I believe that with the right support and resources everyone can have the opportunity to thrive.

I enjoy a wide variety of activities including but definitely not limited to: hiking, snowboarding, home improvement, painting, art, and family time. My family is just myself and my 8-year-old son. We are a small but mighty pair. I do care take for one of my brothers, and have family scattered around the United States who pop in occasionally. If I'm not at the office I'm at home taking care of my family or making memories. Always looking forward to what the future may bring and excited to be at Care Connections.

2025-2027 Focused Child Care Network

Starting January 2026!



Focused Child Care Networks are for early learning educators and leaders. They meet monthly to focus on professional learning. Participants will work with the Quality Improvement Specialist to create goals and go through improvement cycles in order to enhance their program and access financial support.

Are you interested in joining?

jessie.williams@socc.edu

The Pyramid Model is a nationally used multi-tiered system of support (MTSS) and framework of evidence-based practices for promoting young children's social and emotional development.

CARE CONNECTIONS STAFF UPDATE

AMY SMITH

SHARED SERVICES BUSINESS COACH



Hello! My name is Amy Smith, and I am excited to join Care Connections as a Child Care Business Advisor. I bring a background in business, marketing, compliance, and higher education, along with a strong passion for supporting early-learning providers and small business owners.

I hold an MBA from Eastern Oregon University, a Bachelor of Science in Marketing from Linfield University, and I am currently pursuing a Master's in Law with a focus on compliance and risk management. In addition to this role, I serve as a part-time business professor, where I work closely with students on business planning, financial analysis, and strategic decision-making.

My professional experience includes coaching individuals through career pathways, navigating benefits and workforce programs, and helping small businesses understand systems, requirements, and sustainable growth strategies. Through Care Connections, I look forward to working alongside child care providers to support business operations, shared services, and access to statewide resources such as ORO, SPARK, and professional development pathways.

I am passionate about helping providers feel confident, informed, and supported as they strengthen their businesses and continue their essential work for children and families in our community. I look forward to connecting with you and being a resource along your journey.

Are you interested in Shared Services?

See the next page for more information on getting connected!



Let's get started

New Shared Services

Empowering Early Learning Providers

Business Coaching & Shared Services

Brought to you by Care Connections CCR&R and Oregon Child Care Alliance

Unlock the support you need to strengthen and grow your child care business. Amy Smith at Care Connections, offers personalized business coaching, helpful resources, and access to shared-services tools designed to make your program more efficient, sustainable, and successful. Whether you need guidance with budgeting, enrollment, policies, marketing, or navigating Oregon's child care requirements, we're here to help you focus on what matters most—quality care for children and families.

Free • Confidential • Provider-Focused

Let's build a stronger early learning community together. Receive free child care management software

For more information:



amy.smith@socc.edu

541-888-7094

INTERESTED IN STARTING A CHILDCARE BUSINESS IN COOS OR CURRY COUNTY?

JOIN US THIS WINTER FOR OUR

CHILDCARE ACCELERATOR PROGRAM

FOR MORE INFORMATION OR TO REGISTER [CLICK HERE](#)

Orientation week of
January 12th, 2026
Via Zoom



Up to \$2,500 in financial incentives available with completion of qualifying task!

- Complete 8 week Cohort
- Become an ERDC Registered Provider
- Become a Licensed Provider

**Week 1
January 19th,
2026**



The following **populations** will be **prioritized**:

BIPOC, Latine/LatinX and under-resourced community members with a focus on women.

Interested participants who are not part of the above mentioned communities are also welcome to apply

THIS OPPORTUNITY IS BROUGHT TO YOU IN COLLABORATION WITH



COOS
HISPANIC
ALLIES



South Coast
Early Learning




SOUTHWESTERN
AN OREGON COMMUNITY COLLEGE



ANITA SANCHEZ

Experience



Hi there! My name is Anita, and I've worked in the Early Childhood Education for over 30 years. Throughout my career, I've had the joy of working in elementary schools, running my own preschool, and serving as a Child Care Small Business Advisor supporting others in creating nurturing, successful learning environments. I earned my Bachelor's degree in Spanish from Southern Oregon University and continued my education in Early Childhood Development. Working with young children and helping educators grow has always been my calling, and I'm excited to continue sharing my knowledge and love for early learning!




Teaching

After 18 amazing years running my own preschool, I decided to take what I'd learned and share it with others! I transitioned into a role as a Child Care Small Business Advisor, where I've had the joy of working with providers all across Oregon, helping them grow their programs, strengthen their businesses, offering guidance, resources, and support. It's been so rewarding to support others who share the same passion for helping children thrive!



Classrooms



After the wonderful years supporting child care providers and programs across Oregon, I realized how much I missed the laughter, curiosity, and joy that come from working directly with children and families. That's what led me to Western Oregon University, where I found my perfect fit with TRI and CCSO! Now, I get to combine my love for teaching, mentoring and supporting classrooms and educators who make magic happen every day. I can't wait to visit your program, meet your amazing teachers and children, and share in the excitement of helping young learners grow and shine! 🌟

Phone: (503) 751 - 4045

Contact CCSO Email: childcaresubor@wou.edu

Website: childcaresubor.org

Statewide CCR&R Webinars

We are happy to offer online Statewide trainings.

PLEASE NOTE: You must complete the registration process to receive the Zoom link AND you must attend the entire training to receive ORO credit, per Statewide Training Policy.

[Pre-register for one or more by clicking this link](#) or scanning the QR code -->



Playing Isn't Just for Kids: Creating Events that Honor, Connect, and Celebrate Families & Communities within our ECE

Presented by Rhonda Shock

Monday, January 5, 2026 from 6 - 9 pm

We will be exploring strategies & tools to include all families in our ECE programs in order to make connections with other families, creating a stronger community of parents and resources as well as honoring family cultures and connections to needed resources. We will be exploring techniques to share with families about how to support their children through play.

Set 2, Family & Community Systems/FCS, No Age

Getting to know 211 info

Presented by Kerry Wels

Tuesday, January 13, 2026 from 6 - 7 pm

211info helps communities identify, navigate, and connect with the local resources they need. This presentation will cover the basics of the services that 211info offers. We will discuss 211info's Child Care and Community Service referrals and different ways that 211info can help you and the families of children in your care.

Set 1, Program Management, No Age

Exploring the Reggio Emilia Inspired Approach

Presented by Aoife Magee

Wednesday, January 14, 2026 from 6 - 9 pm

In this workshop, participants will explore the Reggio Emilia Inspired approach to early childhood learning environments. We will examine the Key Principles of the Reggio Emilia philosophy, which emphasizes the benefits of hands-on exploration, collaboration, and the environment as a "third teacher". Participants will apply elements of a child-directed, inquiry-based approach in their practices with children.

Set 2, Learning Environment & Curriculum, Infant/Toddler & Preschool

Statewide CCR&R Webinars

Introduction to Let's Play! Movement Games for Young Children: Games and Movement to Support the Young Child's Development and Learning

Presented by Paula Lynam

Thursday, January 15, 2026 from 6 - 9 pm

Through introducing the foundational senses:(touch, proprioception, vestibular, life), and developmental movements, we will explore games, movement and a variety of activities to support the health and development of the whole child.

Set 1, Health, Safety & Nutrition, No Age

Adults Come to Learning Experiences with Histories: Adults Learning Principles Series

Presented by Kiki Omoto and Annie O'Rourke

Wednesday, January 21, 2026 from 12 - 1:30 pm

Would you like to create learning spaces that feel more meaningful and engaging for adult learners? Together, we will explore and practice ways to connect adults' prior knowledge and experiences to new learning.

Set 2, PPLD, No Age

Sensory Smarts: Understanding and Supporting Sensory Needs in Infants and Toddlers

Presented by Cindy Ryan

Monday, February 2, 2026 from 6 - 9 pm

As educators, it's important to know how little ones take in and respond to sights, sounds, touch, and more. In this workshop we'll explore what sensory needs look like for infants/toddlers and share practical ways to support them every day. You'll leave with fresh ideas and strategies for creating fun, sensory-friendly spaces.

Set 3, 1.5 Learning Environment & Curriculum/1.5 Special Needs, Infant/Toddler

Keeping Children Physically Safe

Presented by Kathleen Walker-Henderson

Thursday, Feb. 5, 2026 from 6 - 8 pm

This training will examine the requirements for both indoor and outdoor environments to ensure the physical safety of all children, in accordance with state and local licensing. Examples will be explored to develop a plan to monitor safety in these environments.

Set 2, Health, Safety & Nutrition, All Ages

Statewide CCR&R Webinars

Autism 201

Presented by Jennifer Cork

Tuesday, Feb. 10, 2026 from 6 - 8 pm

Autism 201 reviews information about autism spectrum disorder (ASD) including the symptoms, causes, treatments, and an overview of how you can support someone with autism in the classroom.

Set 2, Special Needs, All Ages

Child Care Substitutes of Oregon: Forming connections to support the well-being of Oregon's Communities.

Presented by Bertha Camacho and Veronica Mendoza Ochoa

Thursday, Feb. 12, 2026 from 6 - 8 pm

This session introduces participants to the Child Care Substitutes of Oregon (CCSO) program's basics that include: What is CCSO, what programs are eligible for CCSO services and how to enroll, & what are the requirements to become a CCSO substitute with tips for applying. During this training, participants will learn what Child Care Substitutes of Oregon is and how they can potentially utilize this service to align with program needs.

Set 1, Program Management, No Age

De-Escalation Strategies for Early Childhood Educators

Presented by Jose Hernandez

Wednesday, Feb. 18, 2026 from 6 - 9 pm

This training helps educators recognize early signs of emotional escalation in young children and apply age-appropriate de-escalation strategies. Participants will explore the escalation cycle, co-regulation, and the impact of self-regulation, then apply skills through scenarios and develop a personal action plan.

Set 2, Understanding & Guiding Behavior, Preschool

SEIU: The Basics of the Child Meal Pattern Requirements

Presented by Carmen Romero

Tuesday, Feb. 24, 2026 from 6 - 7 pm

The training will cover the specific nutritional guidelines and meal patterns for children participating in the CCFP. This includes requirements for different age groups and food components such as vegetables, fruits, whole grains, milk, and meat or meat alternatives, as well as portion sizes. Participants will learn how to meet requirements for milk, gluten, and whole grains, along with the principles of Offer Versus Serve.

Set 1, Health, Safety & Nutrition, All Ages

Statewide CCR&R Webinars

Making Your Observations an Effective, Inclusive, and Integral Part of Your Classroom: How to Break Down What We Observe and Inject Skill-Building Opportunities into Play Presented by Rhonda Schock

Tuesday, March 3, 2026 from 6 - 9 pm

We will explore the links between authentic observation and assessments and ways to individualize curriculum, develop proactive programs and design play based strategies to strengthen skills.

Set 2, Observation & Assessment, No Age

Discussing Gender Expression in Early Childhood

Presented by Samuel Broaden

Tuesday, March 10, 2026 from 6 - 8 pm

In this training, participants will be introduced to the ideas of gender and gender expression. Participants will also learn strategies to support the children they work with in their journey of gender and gender identity.

Set 1, Diversity, No Age

Addressing Proprioception and Vestibular Needs in the Classroom: A Teacher's Toolkit

Presented by Amy Williams

Thursday, March 12, 2026 from 6 - 9 pm

The proprioceptive and vestibular senses are often misunderstood and can be difficult to address in a school environment. How does this play out in the classroom and what are they exactly? Explore ways to support a healthy sensory diet that support the entire community, including children with special needs. Develop experiences that help children with core strength, balance, and self-regulation.

Set 2, Special Needs, Preschool

Inclusive Transitions: Assessing Kinder Readiness for Every Child

Presented by Danielle Stamm Thomas

Thursday, March 19, 2026 from 6 - 9 pm

This session will explore strategies for assessing all children for kindergarten readiness and successfully transitioning children from preschool to kindergarten. In particular, we will examine collaborative strategies for children with IFSPs or other support needs to ensure all children arrive ready to kindergarten.

Set 2, Special Needs/Observation & Assessment, Preschool

Statewide Webinars - en español

Únase a nosotros en los seminarios web estatales en línea como parte de un consorcio estatal. Inscríbase previamente en uno o más seminarios escaneando el código QR o [usando este enlace](#). Debe completar el proceso de registro para recibir el enlace de Zoom. Para preguntas, escriba a Jaimee.rice@socc.edu.



Sesgo implícito: Explorando la influencia de la cultura familiar personal en la práctica docente

(Implicit Bias: Exploring the influence of personal family culture on teaching practice)

Presentada por Cassandra Hernandez

Jueves 8 de enero de 2026, de 18:00 a 21:00 horas

Ven a explorar la influencia de tu propia cultura y visión del mundo en la manera en que enseñas e interactúas con los niños y sus familias. Los participantes examinarán sus creencias y preferencias para comprender mejor sus sesgos implícitos y así fortalecer la conexión con las familias a su cuidado.

Come explore the influence of your own culture and world view on the way you teach and interact with children and their families. Participants will examine their beliefs and preferences to better understand their implicit bias to improve connection with the families in their care.

Set 2, Diversity/Family & Community Systems, No Age

Diseño de Estrategias Ambientales para la Gestión Conductual Efectiva

(Designing Environmental Strategies for Effective Behavior Management)

Presentada por Roxana Hoyle

Jueves 22 de enero de 2026, de 18:00 a 21:00 horas

Esta capacitación se enfocará en el ambiente educativo como un "tercer maestro," abordando estrategias que consideran el entorno como un recurso. Los participantes explorarán el diseño del ambiente, materiales, iluminación, organización y estética del aula como elementos activos en el aprendizaje y la regulación conductual

This training will focus on the educational environment as a "third teacher," addressing strategies that consider the environment as a resource. Participants will explore environment design, materials, lighting, organization, and classroom aesthetics as active elements in learning and behavioral regulation.

Set 2, Learning Environments & Curriculum/Understanding & Guiding Behavior, Preschool

Statewide Webinars - en español

Suplentes de Cuidado Infantil de Oregon: Formando conexiones para apoyar el bienestar de las Comunidades de Oregon

(Child Care Substitutes of Oregon: Forming connections to support the well-being of Oregon's Communities)

Presentado por Bertha Camacho y Veronica Mendoza Ochoa

Jueves 29 de enero de 2026, de 18:00 a 20:00 horas

Esta sesión introduce a los participantes a los conceptos básicos del programa Suplentes del Cuidado Infantil de Oregon. (Child Care Substitutes of Oregon, CCSO por sus siglas en inglés) que incluyen: Qué es CCSO, que programas son elegibles para los servicios de CCSO y cómo inscribirse, y cuáles son los requisitos para convertirse en un suplente de CCSO con consejos para aplicar. Durante esta capacitación, los participantes aprenderán qué es el programa de Suplentes del Cuidado Infantil en Oregon y cómo pueden utilizar este servicio para satisfacer las necesidades del programa.

This session introduces participants to the Child Care Substitutes of Oregon (CCSO) program's basics that include: What is CCSO, what programs are eligible for CCSO services and how to enroll, & what are the requirements to become a CCSO substitute with tips for applying. During this training, participants will learn what Child Care Substitutes of Oregon is and how they can potentially utilize this service to align with program needs.

Set 1, Program Management, No Age

Trauma y sus tipos

(Trauma and Types of Trauma)

Presentada por Sara Ashou

Jueves 19 de febrero de 2026, de 18:00 a 21:00 horas

En esta capacitación, los participantes profundizarán en el tema del trauma y los tipos de trauma. Los proveedores explorarán el impacto que el trauma tiene en las personas y en las comunidades en las que viven y aprenden. Los participantes continuarán ampliando sus conocimientos sobre el tema del trauma y los diferentes tipos de trauma que ocurren en la vida cotidiana.

Within this training, participants will take an in-depth look into Trauma and Types of Trauma. Providers will explore the impact trauma has on individuals and the communities in which they live and learn. Participants will continue to increase their knowledge surrounding the topic of trauma and the types of trauma occurring in everyday life.

Set 2, Health Safety & Nutrition, No Age

Statewide Webinars - en español

Niños jugando – Cerebros en acción

(Children at Play – Brains at Work)

Presentada por Lucia Aleman

Lunes 23 de febrero de 2026, de 18:00 a 21:00 horas

Venga a explorar los distintos tipos de juego y a analizar las teorías de Piaget y Vygotsky sobre cómo los niños aprenden a través del juego. Investigue cómo las actividades lúdicas fomentan los dominios del desarrollo cognitivo, social, emocional y físico, y su relación con los procesos cerebrales. Desarrolle actividades de juego que interesen a los niños, involucren los sentidos, fortalezcan los dominios de desarrollo y contribuyan al crecimiento cerebral.

Come to explore many types of play and examine theories of Piaget and Vygotsky on how children learn through play. Investigate how play activities promote cognitive, social, emotional and physical developmental domains and link to brain processes. Develop play activities that interest children, involve senses, strengthen domains, and build brains.

Set 2, Human Growth & Development, Infant/Toddler & Preschool

Estrategias de desescalada para educadores de la primera infancia

Calma en el Chaos

(De-Escalation Strategies for Early Childhood Educators: Calm in the Chaos)

Presentado por Jose Hernandez

Miércoles 25 de febrero de 2026, de 18:00 a 21:00 horas

Esta capacitación se centra en reconocer las primeras señales de escalada emocional en niños pequeños e implementar estrategias de desescalada eficaces y apropiadas para su desarrollo. Los participantes aprenderán sobre el ciclo de escalada, la correulación y cómo su propia autorregulación impacta los resultados. Los educadores aplicarán nuevas habilidades a través de situaciones de la vida real y crearán un plan de acción individual para integrar estrategias de calma en su práctica.

This training helps educators recognize early signs of emotional escalation in young children and apply age-appropriate de-escalation strategies. Participants will explore the escalation cycle, co-regulation, and the impact of self-regulation, then apply skills through scenarios and develop a personal action plan.

Set 2, Understanding & Guiding Behavior, Preschool

Statewide Webinars - en español

SEIU Conceptos básicos de los requisitos del patrón de comidas para niños (The basics of the Child Meal Pattern Requirements)

Presentada por Carmen Romero

Miércoles 11 de marzo de 2026, de 18:00 a 19:00 horas

La capacitación abarcará las pautas nutricionales específicas y los patrones de comidas para los niños que participan en el CCFP. Esto incluye los requisitos para diferentes grupos de edad y componentes alimenticios, como verduras, frutas, cereales integrales, leche y carne o sustitutos de la carne, así como el tamaño de las porciones. Los participantes aprenderán a cumplir los requisitos relativos a la leche, el gluten y los cereales integrales, junto con los principios de Ofrecer Frente a Servir.

The training will cover the specific nutritional guidelines and meal patterns for children participating in the CCFP. This includes requirements for different age groups and food components such as vegetables, fruits, whole grains, milk, and meat or meat alternates, as well as portion sizes. Participants will learn how to meet requirements for milk, gluten, and whole grains, along with the principles of Offer Versus Serve.

Set 1, Health, Safety & Nutrition All Ages

Alfabetización a través de los idiomas: Apoyando a las familias multilingües (Literacy Across Languages: Supporting Multilingual Families)

Presentada por Lorena Rodriquez

Miércoles 25 de marzo de 2026, de 18:00 a 21:00 horas

Descubre estrategias prácticas para apoyar la alfabetización temprana en familias multilingües durante esta capacitación virtual participativa y reflexiva. Explora prácticas inclusivas, celebra la diversidad lingüística y obtén herramientas para empoderar a las familias en el fomento de la lectura y la escritura en el hogar. Sal con conocimientos prácticos para promover la alfabetización en comunidades culturalmente diversas.

Discover practical strategies to support early literacy in multilingual families during this engaging and reflective virtual training. Explore inclusive practices, celebrate linguistic diversity, and gain tools to empower families in fostering reading and writing at home. Leave with actionable insights to nurture literacy in culturally diverse communities.

Set 2, Diversity/Family & Community Systems, No Age

WEBINAR



Business Deductions for Child Care Providers

WHEN:

**Tuesday, January 6th, 2026
5:00–8:00 pm**

Learn how to prepare for tax season with clear guidance on business deductions, recordkeeping, and financial organization tailored to child care providers.

Eduardo Corona Poblador is an Enrolled Agent and CEO of Corona & Corona TKS, specializing in tax preparation and bookkeeping for businesses.

[Register Now](#)



Rating Renewal Updates

What is Spark?

Spark is Oregon's Quality Recognition and Improvement System (QRIS). It is a voluntary program that helps providers strengthen their practices, build on what's working, and celebrate their progress.

Portfolios must be received by June 30, 2026 to be rated.

Spark is being redesigned to better support child care programs, and the portfolio-based rating system will be discontinued.

The Quality Improvement Cycle is already in place and will continue as the ongoing participation for child care programs in Spark. This provides opportunities for reflection, growth, and recognition, as well as increased access to annual funding to support quality improvement for your child care program efforts.



Your Class is Ready!

**Getting your
degree in Early
Childhood
Development is
the fastest way to
become Lead
Teacher Qualified!**

**Apply today to join our Southern Oregon Early Learning
Professional Development Consortium!**

SCHOLARSHIPS AVAILABLE!

Contact Taya Noland at 541.888.7336
www.socc.edu/childhood



Childhood Education & Family Studies Program **Winter 2026 - Registration is open!**

● **ED 258 01 Multicultural Education- (3 Credit) Online**

30 DIV This course introduces anti-bias educational theory and multicultural approaches to teaching, with a focus on how to creatively develop relationships and learning environments that value diversity and help children respect each other as individuals.

● **ECE 151 01 Guidance and Classroom Management - (3 Credit) Online**

30 UGB This course introduces students to the principles of positive guidance, emphasizes the role of the teacher, and the use of direct and indirect techniques for individual and group guidance and management.

● **ECE 152 01 Creative Activities in ECE - (3 Credit) Online**

30 LEC A practical curriculum course focusing on understanding and implementing a developmental approach to creative activities.

● **ECE 163 01 & 163B 01 Preschool Practicum/Environments & Guidance - (5 Credit) Online**

20 LEC *Prerequisites: ECE 150; Central Background Registry (CBR) check is required for this course.*
10 OA The first in a sequence of courses with a practicum co-requisite designed to assist students in gaining experience working with young children in a laboratory or qualified preschool setting.

● **ECE 261 01 & 261B 01 PreK Practicum/Student Teaching- (6 Credit) Online**

20 FCS *Prerequisites: ECE 150; Central Background Registry (CBR) check is required for this course.*
20 LEC The first in a sequence of courses with a practicum co-requisite designed to assist students in gaining experience working with young children in a laboratory or qualified infant/toddler setting.
20 OA

● **HDFS 140 01 Contemporary American Families- (3 Credit) Online**

30 FCS *Prerequisites: WR 121*
An introductory course in marriage and family studies that focuses on the diversity of the contemporary American family today as well as giving an overview of relationships and changes in the family environment and structure over time.

● **HDFS 227 01 Parents as Partners in Education - (3 Credit) Online**

30 FCS Collaborative family partnerships are a key to success in early childhood programs. Course topics highlight formal and informal communication with parents and the community, and how to be culturally-responsive within these relationships.

● **HDFS 247 01 Child Development 0-8 - (3 Credit) Online**

20 HGD This course covers the principles of theory and development for children aged conception through eight years of age. Emphasis is placed on physical, intellectual, emotional, and social development of children, including a strong focus on brain development.
10 OA

Please check out our website at: <http://www.socc.edu/childhood>

Email us at ece@socc.edu

*ORO hours listed are subject to change, please check your Oregon Registry for final hours of credits after submission.



SOUTHWESTERN
AN OREGON COMMUNITY COLLEGE

CARE Connections, your local Child Care Resource & Referral serving Coos and Curry Counties, is a non-profit organization funded through the Department of Early Learning and Care (DELIC). Our mission is to improve the quality of early learning experiences for young children by providing education, information and support to those that care for young children.

CARE Connections links families and Early Educators to each other and to other resources in the community. For early educator training, education, and program information, please call or email:

Coos Office: 541-888-7957

Curry Office: 541-813-1674

Toll-Free: 1-800-611-7555

Website: <https://www.socc.edu/for-the-community/care-connections/>

Southwestern Oregon Community College does not discriminate on the basis of race, color, gender, sexual orientation, marital status, religion, national origin, age, disability status, gender identity, or protected veterans in employment, education, or activities as set forth in compliance with federal and state statutes and regulations.

CARE Connections Contacts

For assistance please call 541-888-7957

Director

Taya Noland
taya.noland@socc.edu

Program Manager

Jaimee Rice
jaimee.rice@socc.edu

Preschool Promise Coach/QS

Natalie Lo
natalie.lo@socc.edu

Preschool Promise Coach/QS

Hannah Hunt
hannah.hunt@socc.edu

Quality Improvement Specialist

Jessie Williams
jessie.williams@socc.edu

Infant/Toddler Specialist

Kay Erickson
kay.erickson1@socc.edu

Infant/Toddler Specialist

Ana Lugo-Ferrin
alugoferrin@socc.edu

Baby Promise Grant Coordinator

Cari Pickett
cari.pickett@socc.edu

Shared Services Business Coach

Amy Smith
amy.smith@socc.edu

Program Assistant

Cynthia Hoggatt
541-888-7957
cynthia.hoggatt@socc.edu

Inclusion Specialist

Fernanda Lucas De La Torre
fernanda.lucas@socc.edu

CARE Connections

Toll-Free 1-800-611-7555

Child Care Referrals 211info.org

Email children@211info.org

USDA Food Program

OCDC 541-770-5893